

Working with RSE Connections

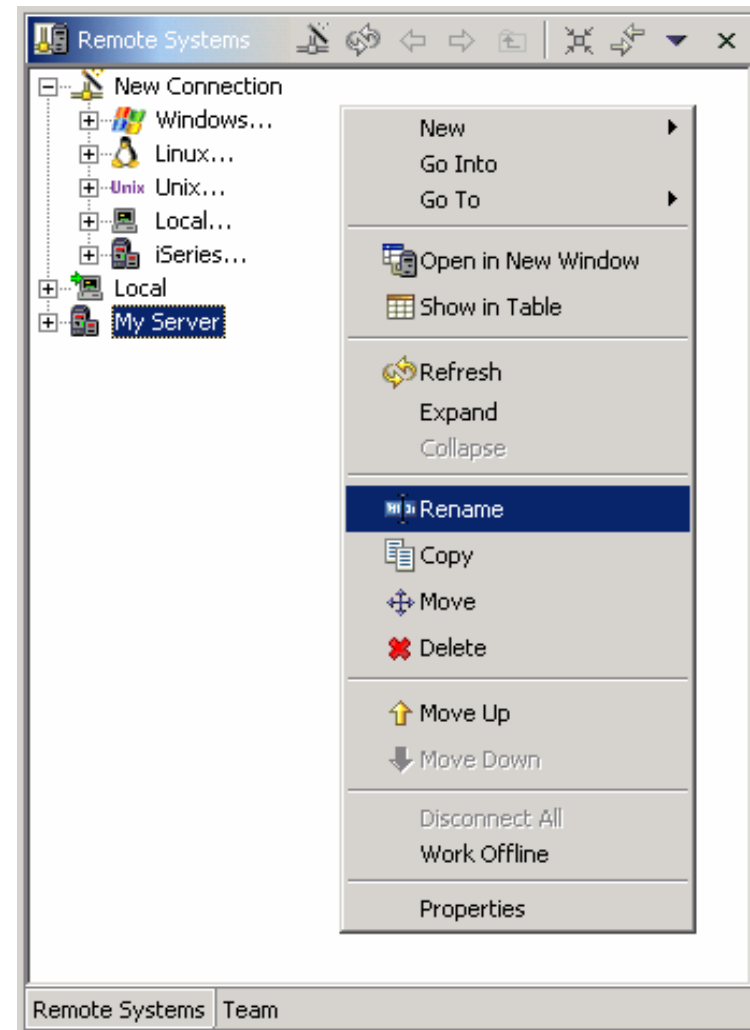
- Remote Systems view manages connections



Create connections here
(using wizard)

Change, rename, copy,
delete them here

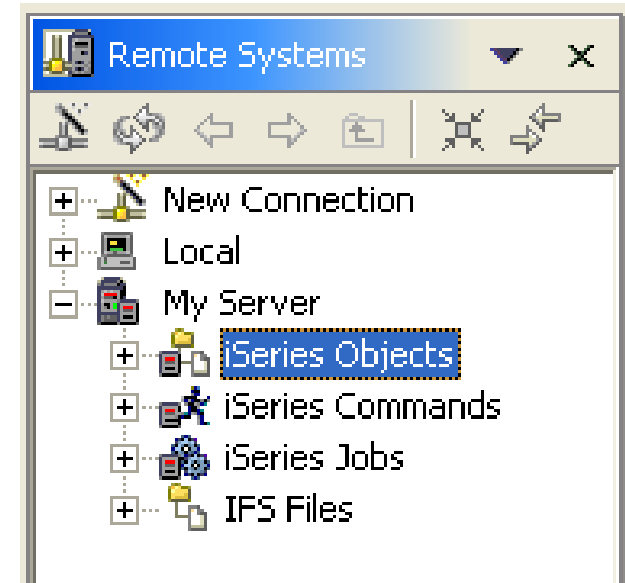
Expand them to work with
resources here



iSeries Connections

- Connections expand to
 - “subsystems”
 - Named grouping of functionality
- Subsystems for iSeries connections:

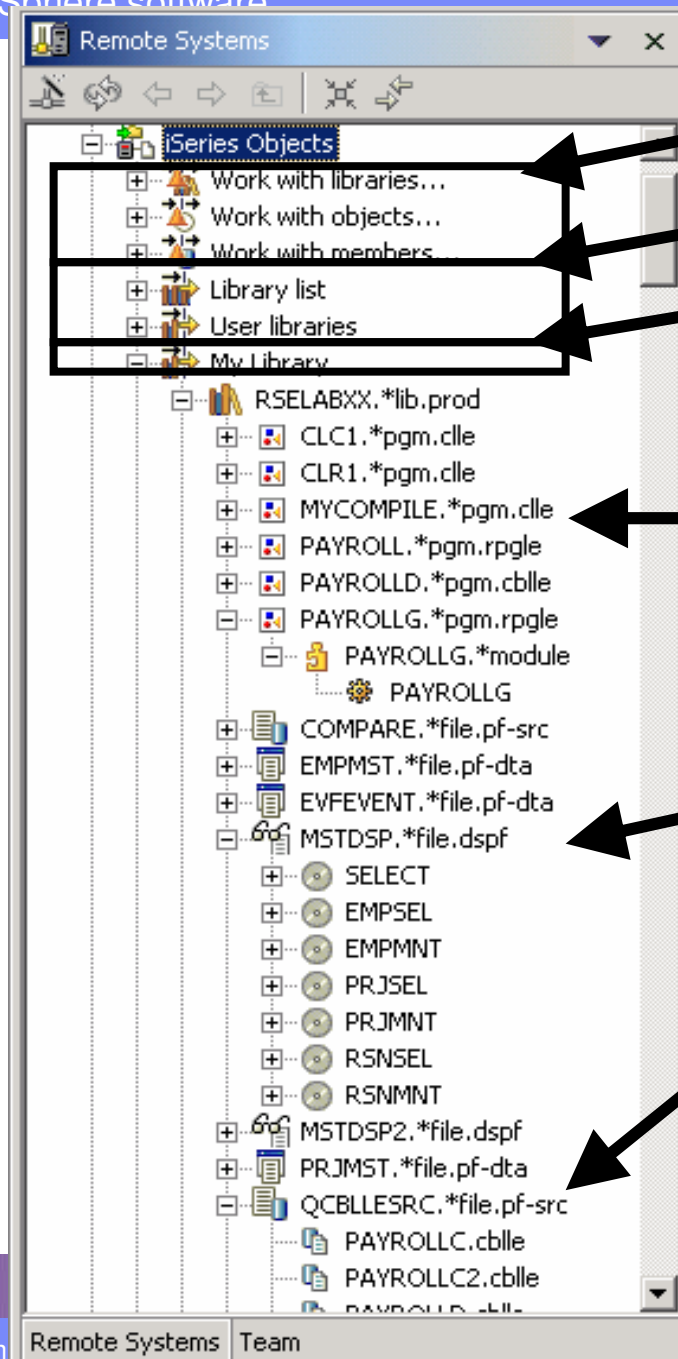
- 1 –iSeries Objects**
 - For working with Libraries, Objects and Members
- 2 –iSeries Commands**
 - For pre-defining and running QSYS command sets
- 3 –iSeries Jobs**
 - For working with jobs
- IFS files**
- 4** –For working with Integrated File System files and commands



1

iSeries Objects

- For drill-down or filtered access to QSYS
 - ✓ Libraries, objects, mbrs
 - ✓ Expand lib to see objs
 - ✓ Expand file to see mbrs
 - ✓ Expand device file to see record fmts, then flds
 - ✓ Expand pgm/srvpgm to see modules, then procs
 - ✓ Expand msgf to see messages
- Similar to PDM



Create new
filters

Supplied filters

User filter

Objects within
expanded
library

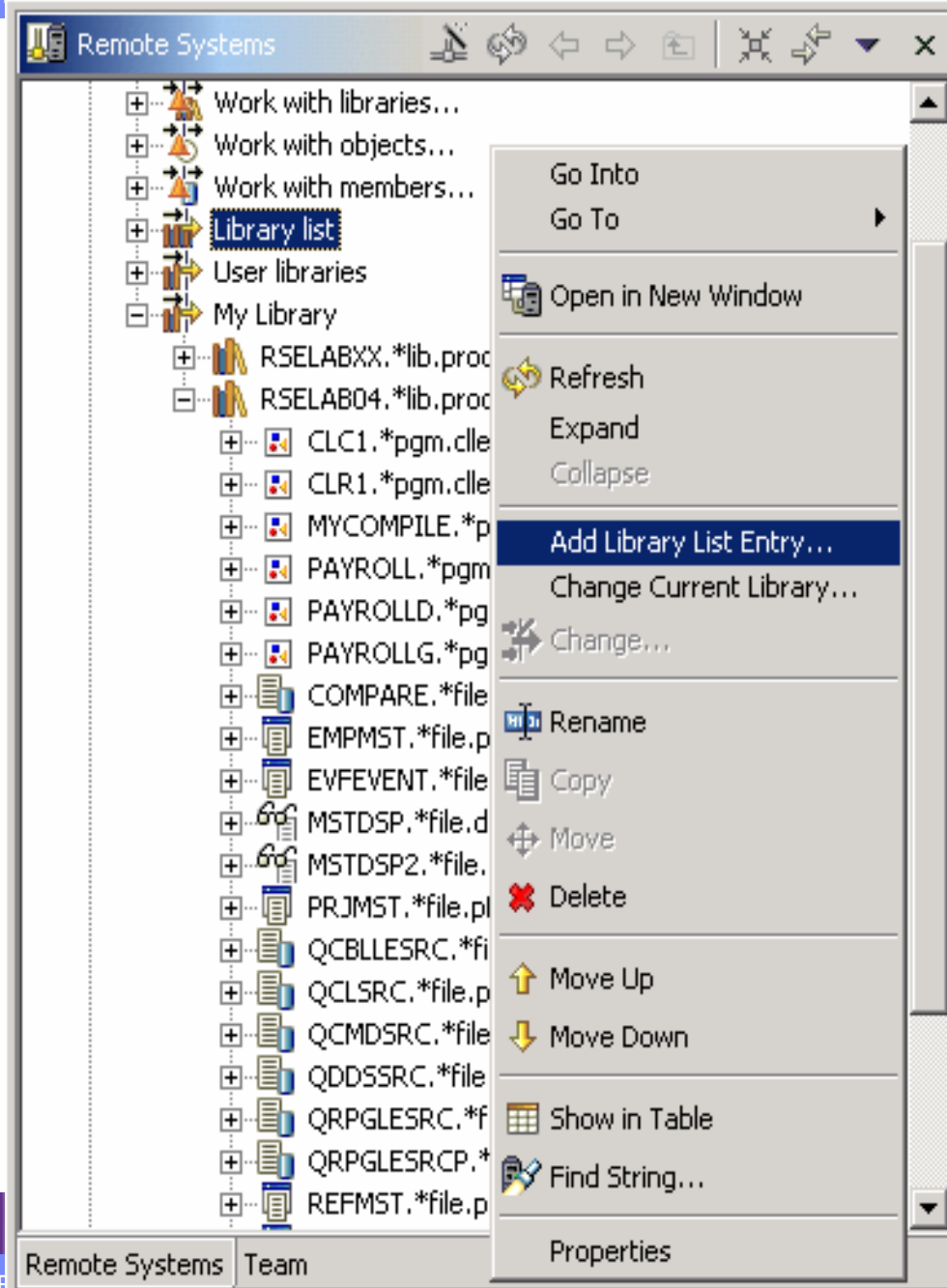
Fields within
device file

Members within
expanded file

1

“Library list” is a pre-defined filter

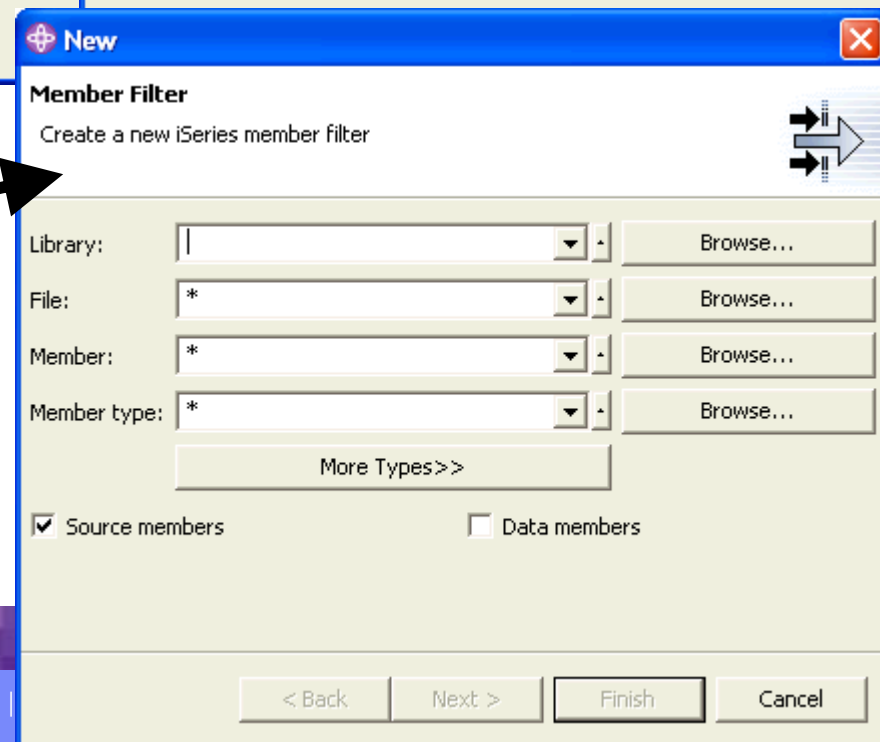
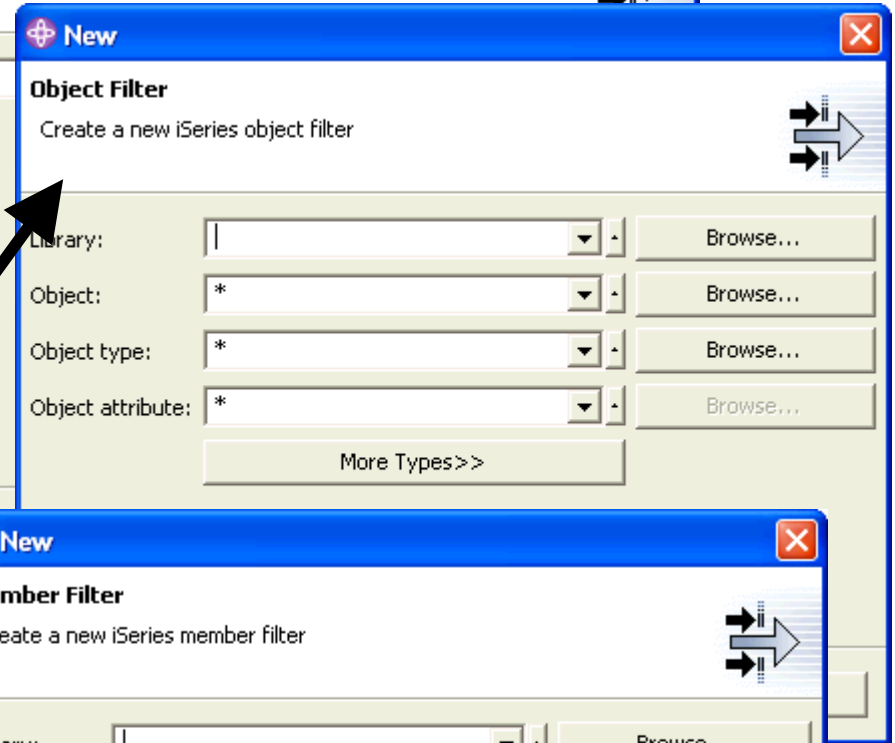
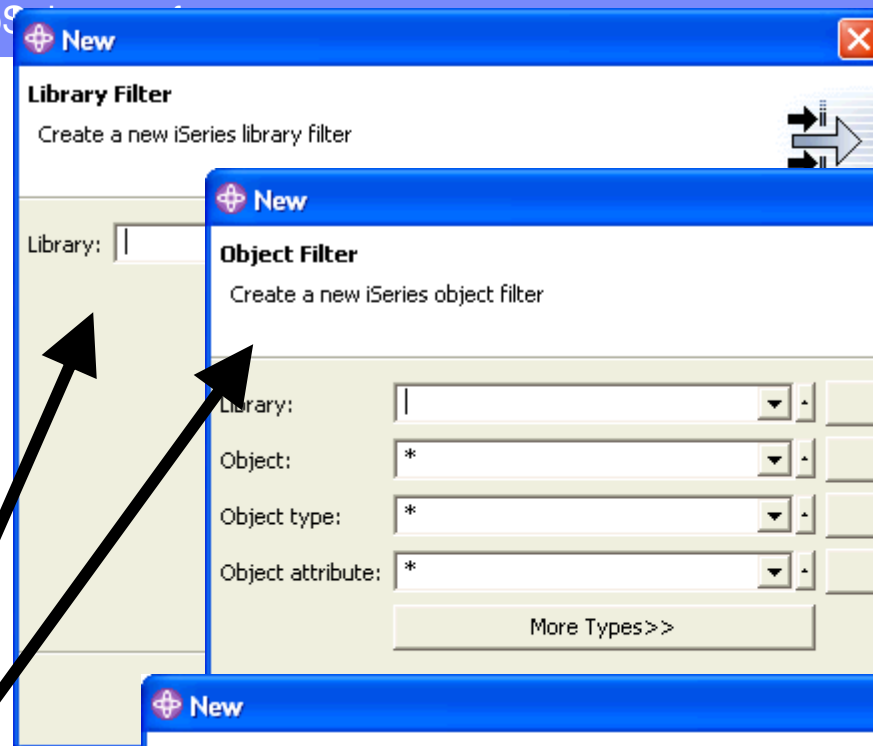
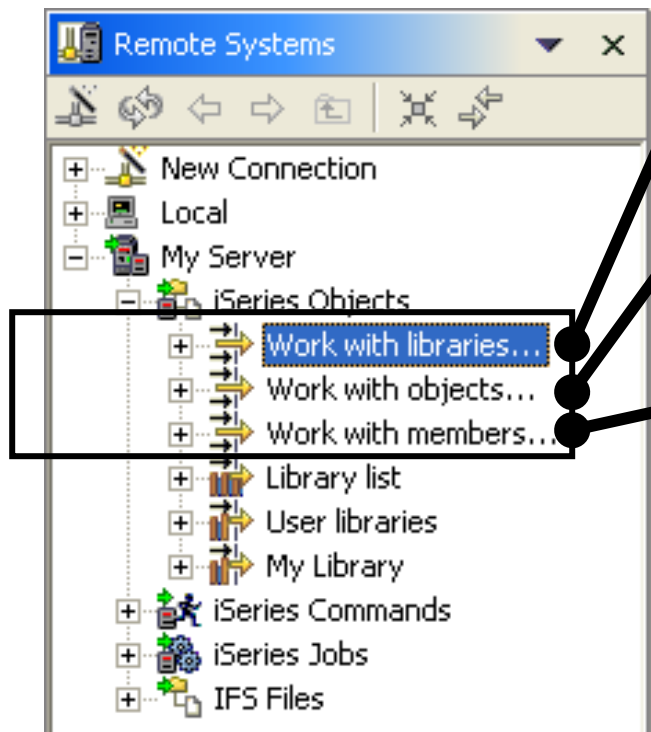
- For accessing and manipulating libl
 - ✓ Like WRKLIBPDM with *LIBL
 - ✓ Filter actions to add to library list, change current library
 - ✓ Library actions to move within libl, remove from libl, add to libl, change curlib



1

Use “Work with xxx”
to create own filters

- Like WRKxxxPDM!



2

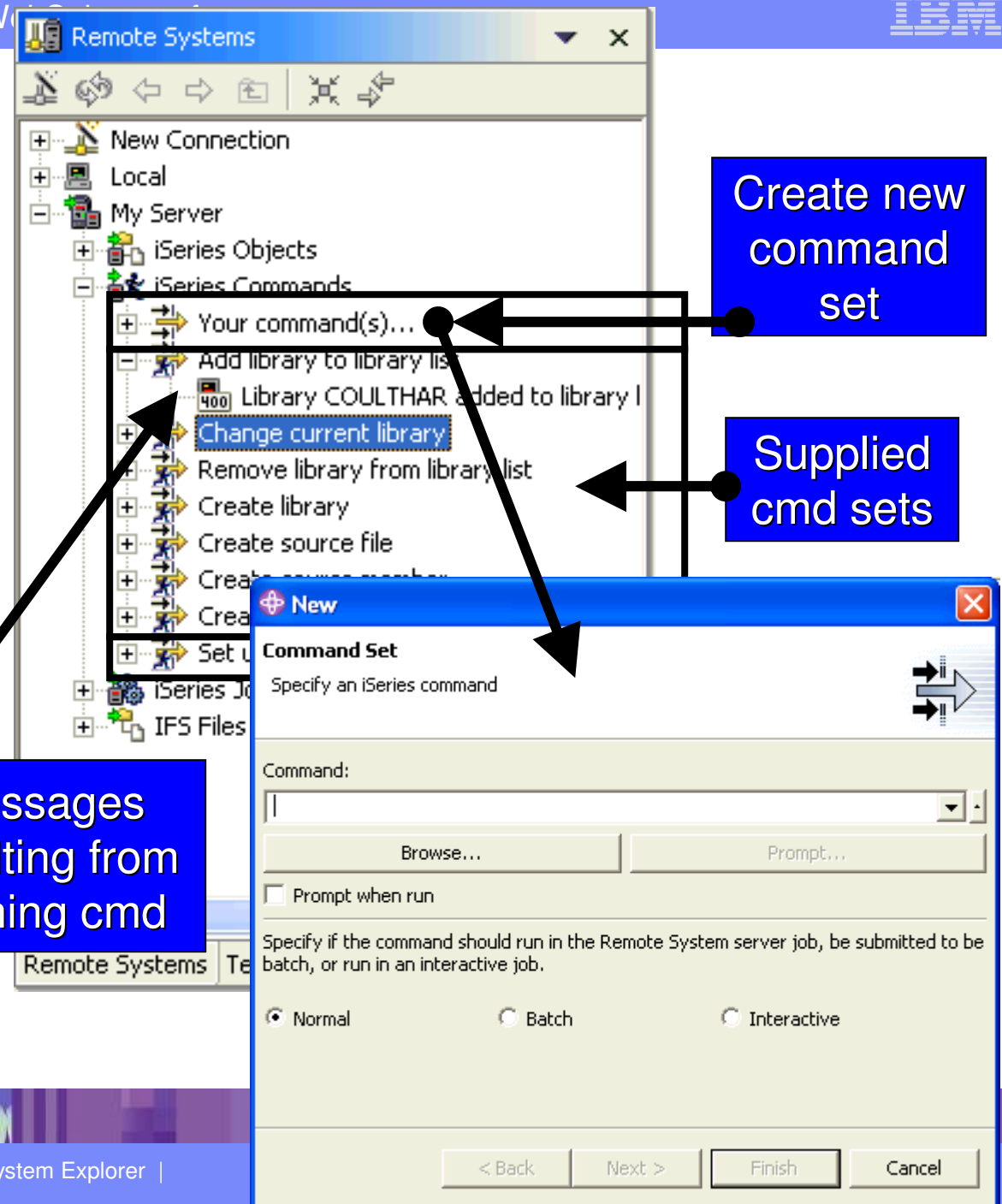
iSeries Commands

- For commonly-used commands

✓ Create **command set** with one or more CL commands

✓ Expand to run commands

Messages resulting from running cmd



3

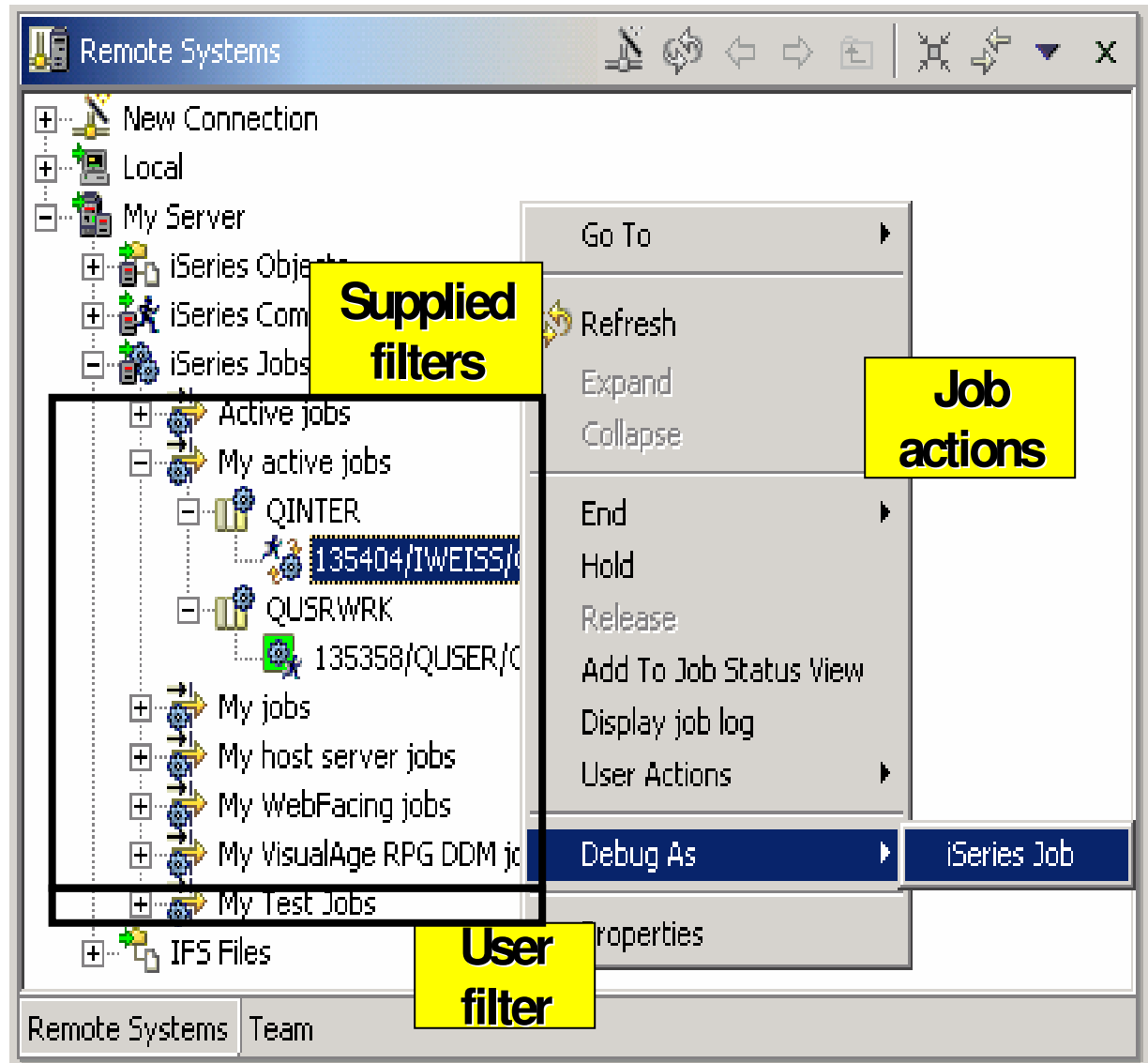
iSeries Jobs

- For accessing jobs

- ✓ Like WRKxxxJOB

- ✓ Create filters to see jobs with specific attributes (right click)

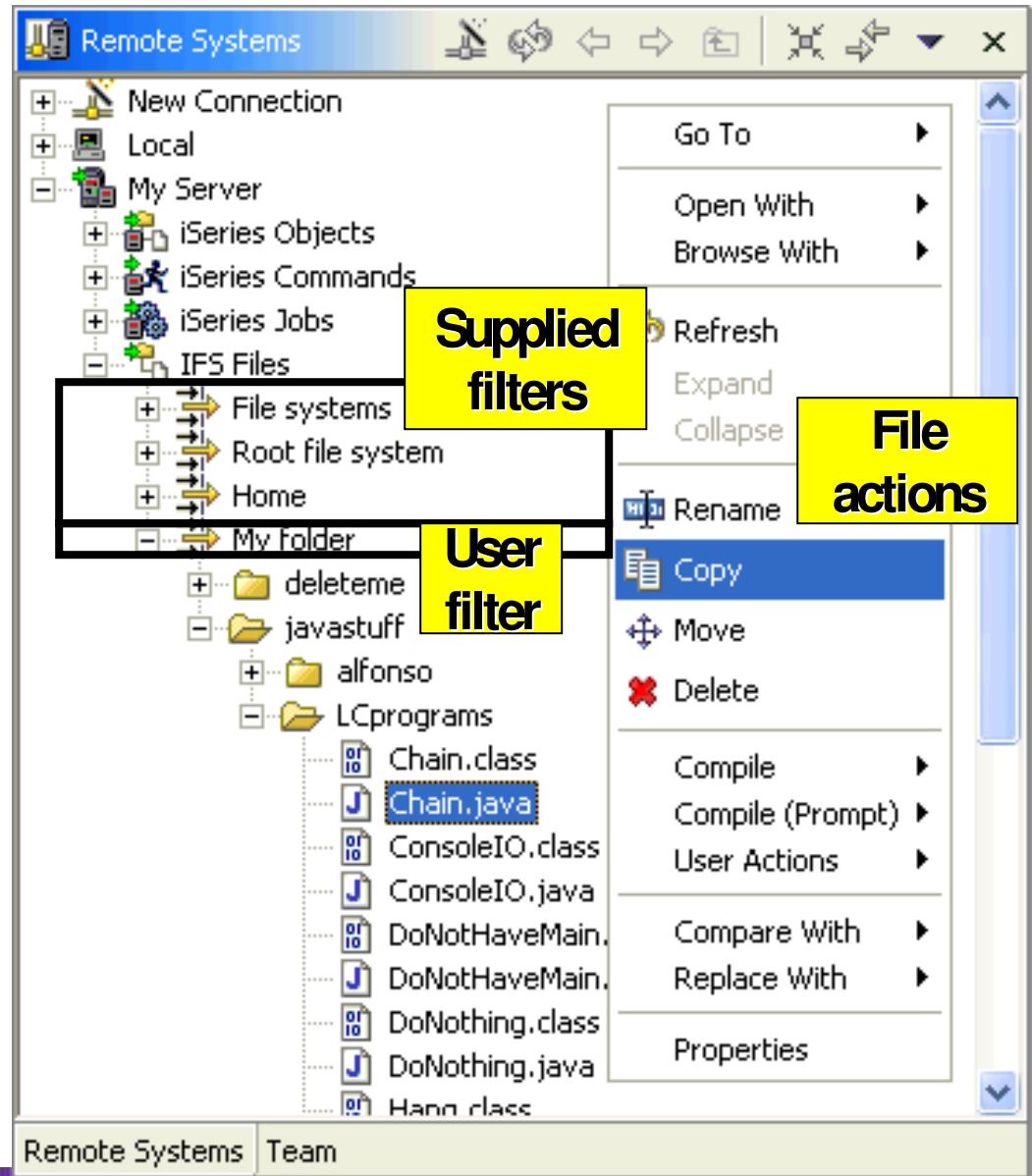
- ✓ Use predefined filters to see your own jobs



4

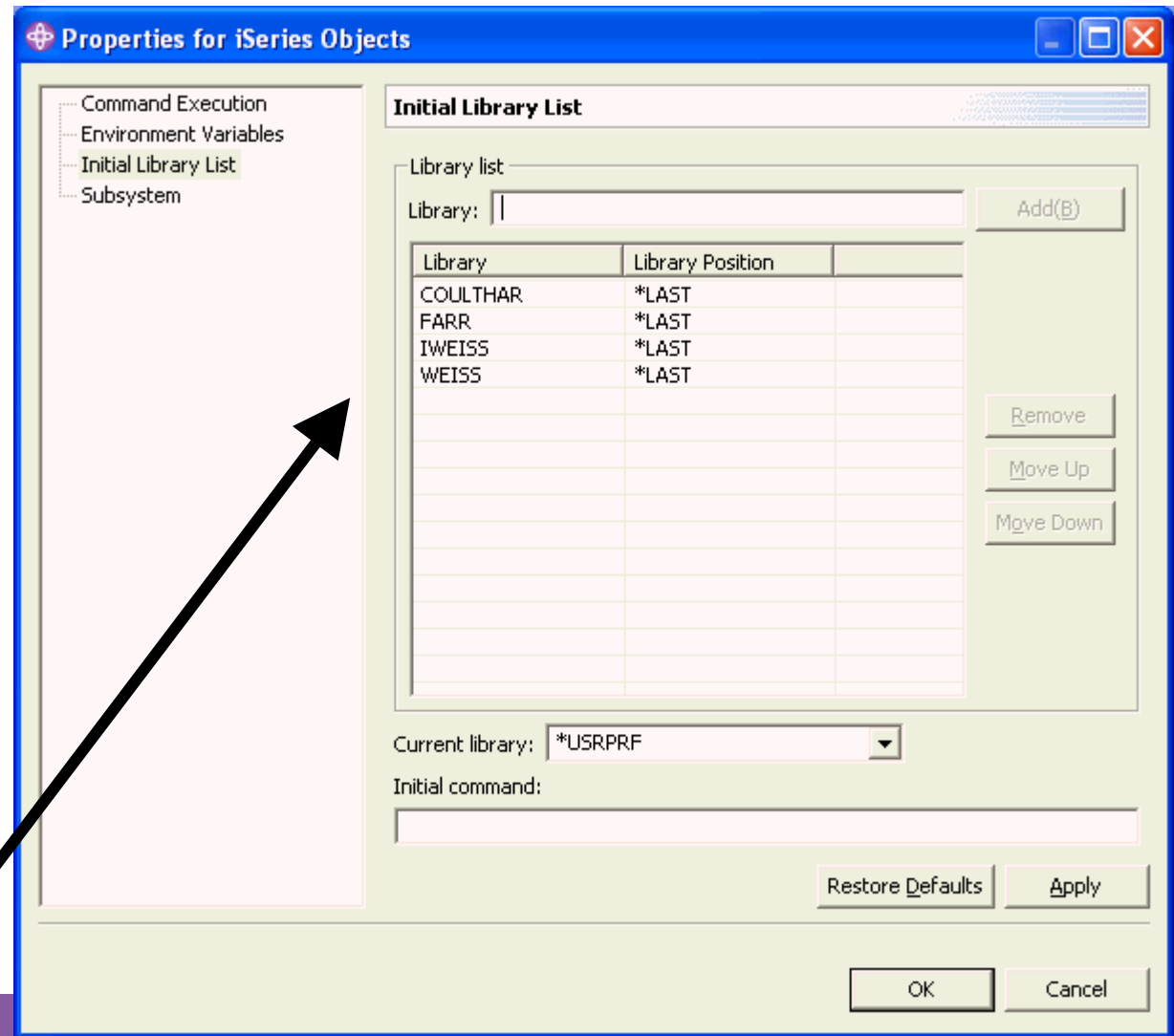
IFS Files

- For accessing folders and files
 - ✓ Like WRKLNK
 - ✓ Create filters to see files in specific folders (right click)
 - ✓ Use predefined filters to drill down
 - ✓ Open command console (right click on IFS Files) for QShell



SubSystem Properties

- Right click on any subsystem in an iSeries connection to configure it via Properties
 - ✓ Specify compile preferences
 - ✓ Specify environment variables
 - ✓ Specify library list



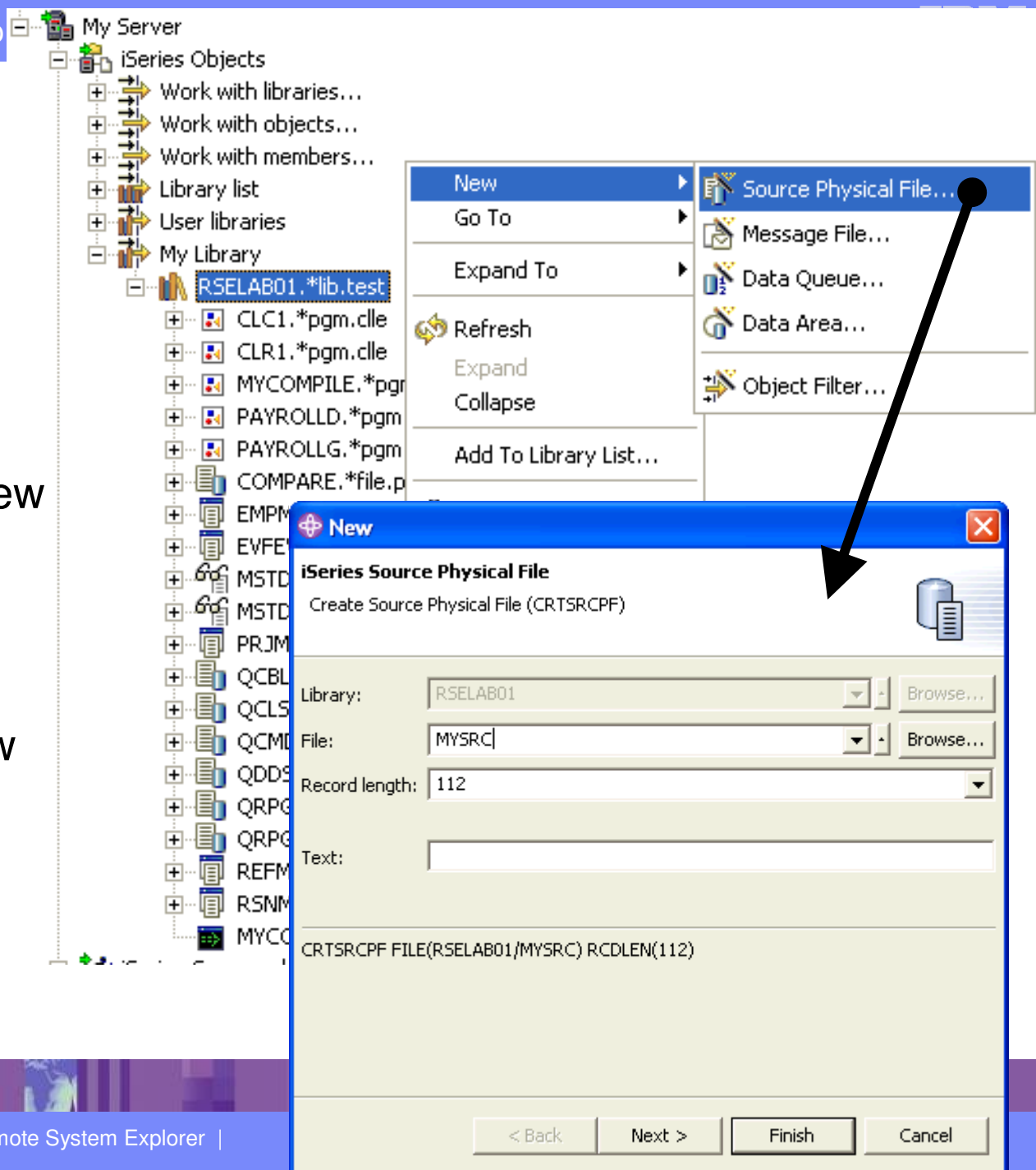
iSeries Objects

- The following focuses on using the iSeries Objects subsystem to work with artifacts in your native QSYS file system



Creating New Things

- Right click for “new” actions
 - ✓ On library filter for new library
 - ✓ On library object for new object
 - ✓ On file object for new member
 - ✓ On msgf object for new message



Working With Things

■ Use right click actions

The diagram illustrates the right-click context menus for four different object types in the IBM System i Tools: *LIB, *PGM, *FILE, and MBR. Each menu is shown with its specific actions, and some actions are further expanded to show sub-menus.

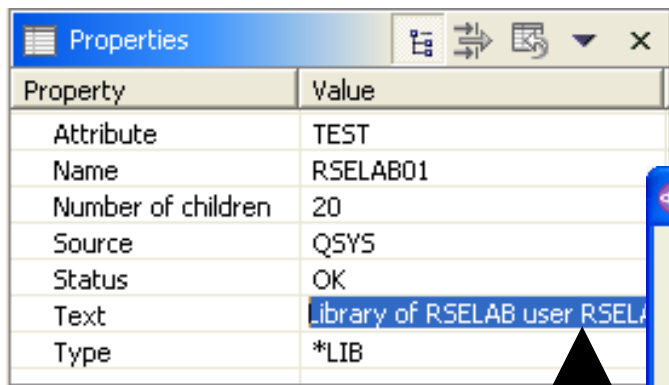
- *LIB (Library):**
 - New
 - Go To
 - Expand To
 - Refresh
 - Expand
 - Collapse
 - Rename
 - Copy
 - Paste
 - Delete
 - Add Library List Entry...
 - Remove From Library List
 - Move Up In Library List
 - Move Down In Library List
 - Move Within Library List...
 - Show in Table
 - Find String...
 - Change...
 - Save(B)...
 - Restore...
 - User Actions
 - Create iSeries Project
 - Properties(K)
- *PGM (Program):**
 - Go To
 - Show in Table
 - Refresh
 - Expand
 - Collapse
 - Rename
 - Copy
 - Paste
 - Move
 - Delete
 - Update...
 - Change...
 - Save...
 - Restore...
 - User Actions
 - Service Entry Point
 - Run As(B)
 - Run(Prompt)(F)
 - Debug As(J)
 - Debug (Prompt)(K)
 - Properties(K)
- *FILE (File):**
 - New
 - Go To
 - Refresh
 - Expand
 - Collapse
 - Rename
 - Copy
 - Paste
 - Move
 - Delete
 - Show in Table
 - Cache File Descriptions
 - Find String...
 - Change(B)...
 - Save...
 - Restore...
 - User Actions
 - Add To iSeries Project...
 - Make Available Offline
 - Properties(K)
- MBR (Member):**
 - Go To
 - Open With
 - Browse With
 - Rename
 - Copy
 - Move
 - Delete
 - Verify
 - Verify (Prompt)
 - Find String...
 - Compile
 - Compile (Prompt)
 - User Actions
 - Add To iSeries Project...
 - Make Available Offline
 - Compare With
 - Properties(K)

Additional details from the expanded menus:

- *LIB *PGM *FILE:** The 'New' and 'Go To' sub-menus contain 'Member...' and 'Member Filter...' options.
- *FILE:** The 'User Actions' sub-menu includes 'Add To iSeries Project...', 'Make Available Offline', and 'Properties(K)'. The 'Find String...' sub-menu includes 'Find String...', 'Change(B)...', 'Save...', 'Restore...', and 'User Actions'.
- MBR:** The 'Compile' sub-menu includes 'Compile', 'Compile (Prompt)', 'User Actions', 'Add To iSeries Project...', 'Make Available Offline', 'Compare With', and 'Properties(K)'. The 'Find String...' sub-menu includes 'Find String...', 'Change(B)...', 'Save...', 'Restore...', and 'User Actions'.

Properties

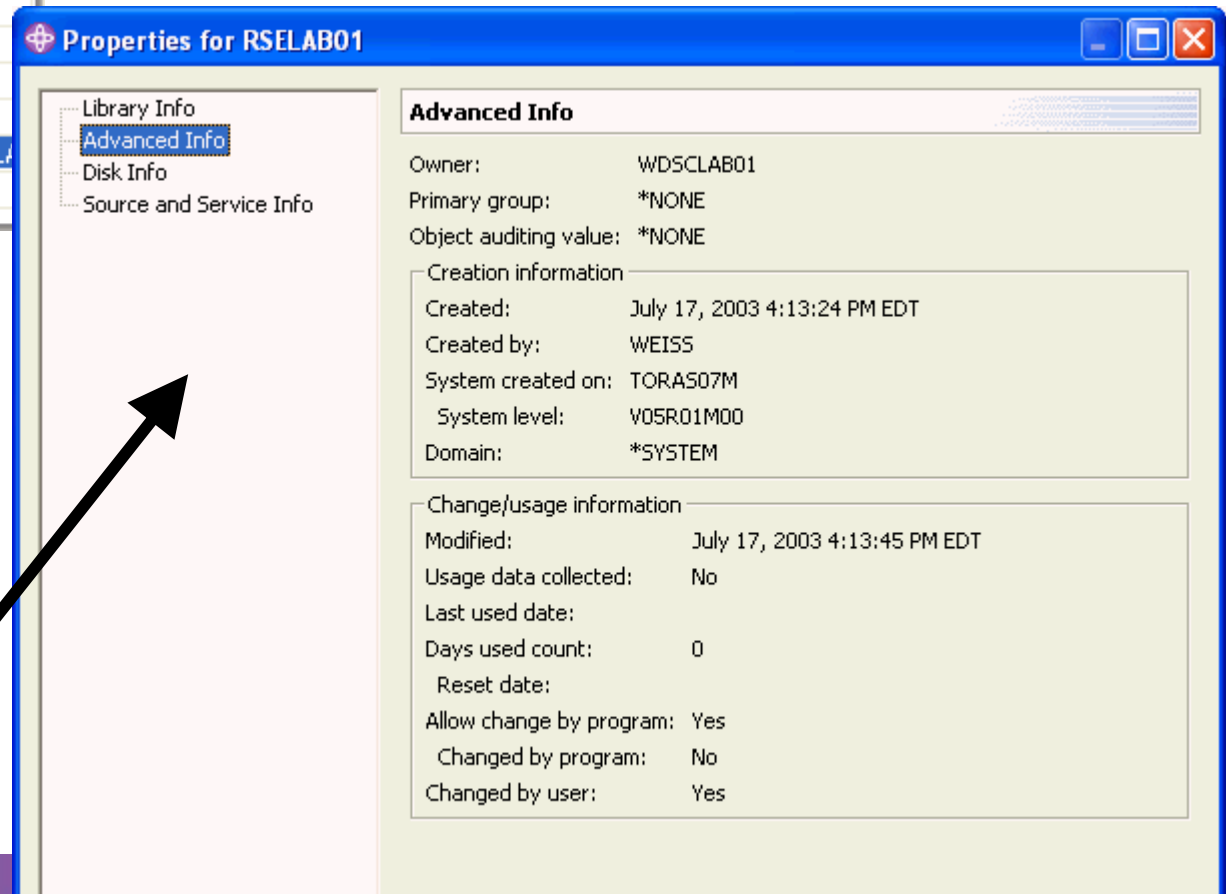
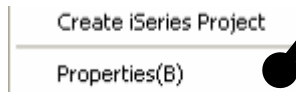
- Use Properties view for quick access to common properties



Property	Value
Attribute	TEST
Name	RSELAB01
Number of children	20
Source	QSYS
Status	OK
Text	Library of RSELAB user RSELAB01
Type	*LIB

Directly editable

- Use Properties dialog for access to all properties



Properties for RSELAB01

Library Info
Advanced Info
Disk Info
Source and Service Info

Advanced Info

Owner: WDSCLAB01
Primary group: *NONE
Object auditing value: *NONE

Creation information

Created: July 17, 2003 4:13:24 PM EDT
Created by: WEISS
System created on: TORAS07M
System level: V05R01M00
Domain: *SYSTEM

Change/usage information

Modified: July 17, 2003 4:13:45 PM EDT
Usage data collected: No
Last used date:
Days used count: 0
Reset date:
Allow change by program: Yes
Changed by program: No
Changed by user: Yes

iSeries Table View

✓ Same popup actions in table, and tree

✓ Sort by clicking on column heading

Library RSELAB01 (20 Objects)

Name	Type	Attribute	Text	Status
CLC1	*PGM	CLLE	debuggable, calls Payrolld, parm workstation num	OK
CLR1	*PGM	CLLE	debuggable, calls Payrollg, parm workstation num	OK
MYCOMPILE	*PGM	CLLE		OK
PAYROLLD	*PGM	CBLL	no errors	OK
PAYROLLG	*PGM	RPGLE		OK
COMPARE	*FILE	PF-SRC		OK
EMPMST	*FILE	PF-DTA		OK

Command Normal Prompt... Run

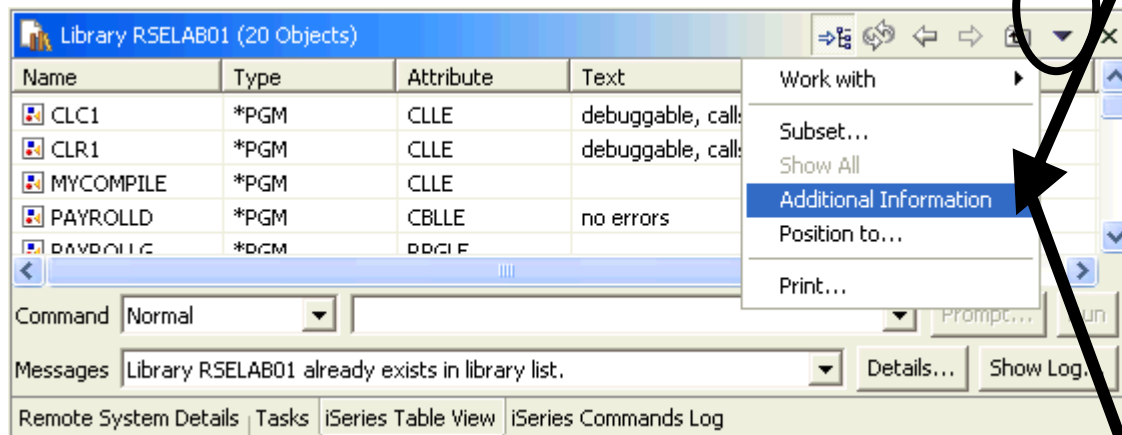
Messages Details... Show Log...

Remote System Details Tasks iSeries Table View iSeries Commands Log

Show children of selected object in a table view

iSeries Table View

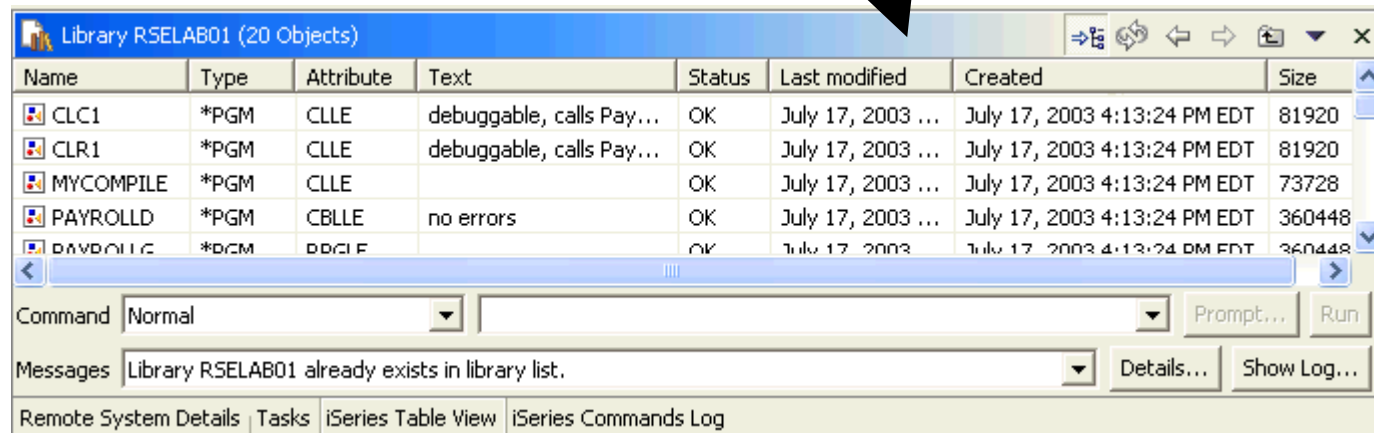
✓ Use local pulldown to see additional columns



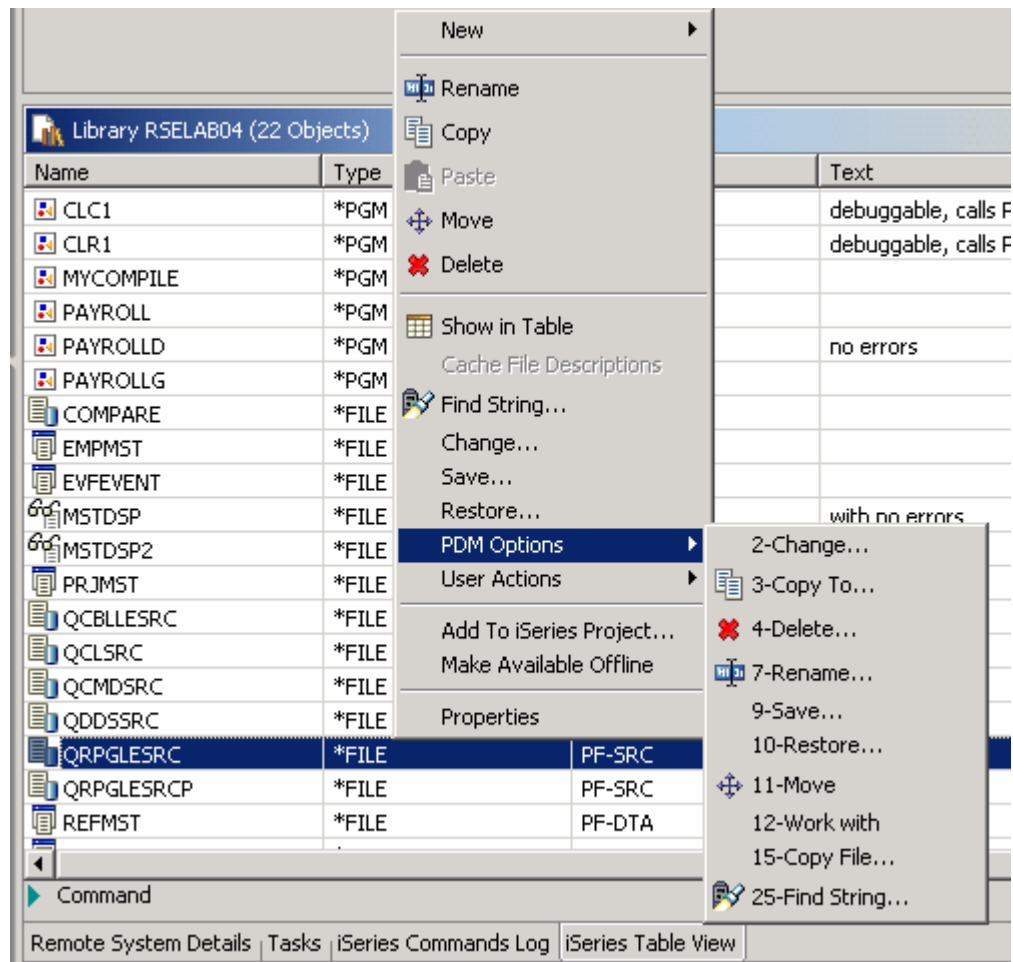
Can also

- ✓ Change contents
- ✓ Subset contents
- ✓ Position list
- ✓ Print list

✓ ... Just like PDM!



iSeries Table View



✓ **Special PDM Options menu
for PDM users**

RSE Command Shell

Library RSELAB01 (22 Objects)

Name	Type	Attribute	Text	Status
CLC1	*PGM		gible, calls Payrolld, par...	OK
CLR1	*PGM		gible, calls Payrollg, par...	OK
MYCOMPILE	*PGM			OK
PAYROLL	*PGM			OK
PAYROLLD	*PGM		ors	OK
PAYROLLG	*PGM	RPGLE		OK
COMPADE	*FILE	DE SRC		OK

•Enter command, press Enter
•Use arrows to retrieve commands

Prompt **Run**

Command: Normal | addlib test | Prompt... | Run

Messages: Library TEST added to library list. | Details... | Show Log...

Remote System Details | Tasks | iSeries Table View | iSeries Commands Log

Show Log

iSeries Commands Log

My Server

addlib test
Library TEST added to library list.
Cause : If the ADDLIB command was used, TEST was added to the user library list. If the CHGSYSLIBL command was used, TEST was added to the system portion of the library list.

Command: Normal | | Prompt... | Run

Remote System Details | Tasks | iSeries Table View | iSeries Commands Log

Multi-file Search

**Select Search->
iSeries from
pulldown menu**

**GUI interface to
FNDSTRPDM**

Search

iSeries Search | File Search | Help Search | Java Search | Plug-in Search

Search string: ENHRS ☐ Case sensitive

Connection: My Server

Target

Library: RSELAB01

File: *

Member: *

☒ Source members ☐ Data members

Columns

☒ All columns

☐ Between 1 and 80

☐ Between(G) 1 and end of line

**Supports generic
names since 5.1**

Search Result

The screenshot displays the IBM Remote System Explorer interface. On the left, the 'Remote Systems' pane shows a tree structure under 'My Server' with 'iSeries Objects' expanded, listing various libraries and programs. The 'Properties' pane at the bottom left shows details for a selected object, including 'Attribute: TEST' and 'Name: RSFI ARN1'.

The main editor window, titled 'Welcome' and 'MSTDSP', displays a table of data. The table has columns for 'Row', 'Column', and 'Replace'. The data is as follows:

Row	Column	Replace
009900	A	ELOCN R B 9 37REFF
010000	A 90	DSPA'
010100	A	10 18'USR
010200	A	EUSRI R B 10 37REFF
010300	A 90	DSPA'
010400	A	11 18'Nor
010500	A	ENHRS R B 11 37REFF
010600	A 90	DSPA'
010700	A	13 30'Time
010800	A	15 40'Cur
010900	A	

A yellow callout box with a black arrow pointing to the 'ENHRS' entry in row 010500 contains the text: "Double click on match entry to open + position in editor".

The 'Remote Search' pane at the bottom right shows the search results for 'ENHRS' (9 occurrences in 9 members). The results are listed as follows:

- RSELAB01/QDDSSRC(EMPMST) (1 match)
 - A ENHRS R (line 18)
- RSELAB01/QDDSSRC(MSTDSP) (1 match)
 - A ENHRS R B 11 37REFFLD(RCEMP/ENHRS *LIBL/EMPMST) (line 104)
- RSELAB01/QDDSSRC(MSTDSPV) (1 match)
 - A ENHRS R B 11 37REFFLD(RCEMP/ENHRS *LIBL/EMPMST) (line 102)
- RSELAB01/QDDSSRC(MSTDSP2) (1 match)
 - A ENHRS R B 11 37REFFLD(RCEMP/ENHRS *LIBL/EMPMST) (line 99)
- RSELAB01/QDDSSRC(REFMST) (1 match)
 - A ENHRS 3 1 TEXT('EMPLOYEE NORMAL WEEK HOURS') (line 27)

The bottom status bar includes tabs for 'Remote System Details', 'Tasks', 'iSeries Table View', 'iSeries Commands Log', and 'Remote Search'.

RSE Drag and Drop

- RSE has rich support for drag and drop
 - ✓ Same as using Copy and Paste

✓ Within same connection

✓ From tree/table view to editor (5.1 and later)

✓ Between command shell and tree view

✓ Between connections

✓ From tree/table view to filter (5.1 and later)

✓ Between table view and tree view