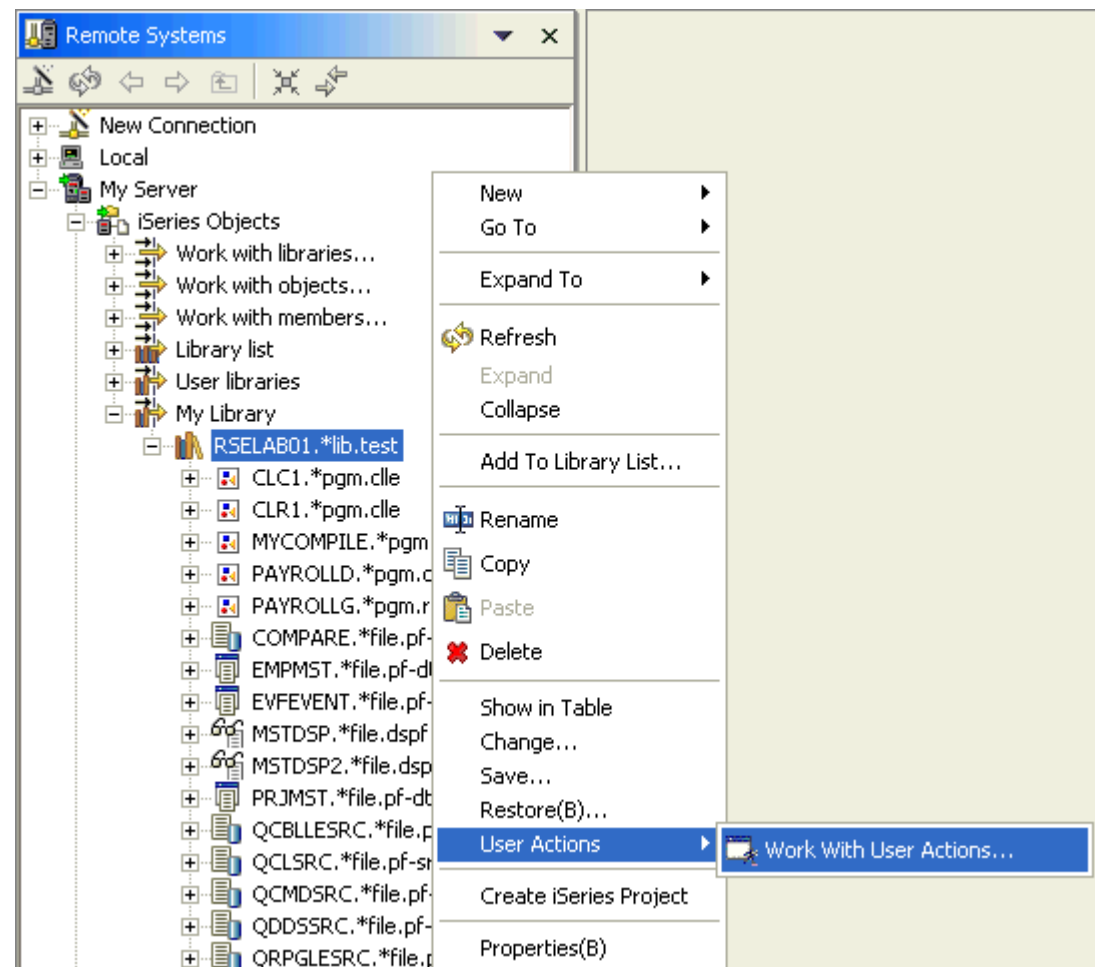


RSE: User Actions

- **User-Defined Actions (like PDM!)**

- Right-click on iSeries Objects or any iSeries object member
- **Work With User Actions**
 - Create, delete or change user-defined actions
 - Scope them by type and attribute



RSE: User Actions

Parent profile: Phil

New
Object action
Member action

Action name: Test action
Comment:
Command: Normal command

ADDLIB LIB(&N)

Insert variable... Edit... Browse...
Prompt...

☐ Prompt first ☐ Refresh after ☒ Show action
☐ Single selection only ☐ Invoke once

Resource types for which this action will appear

Defined Types
FILE_PRTF
FILE_SRC
ILE
LIB
MSGF
MODULE
PGM

Selected Types
LIB

LIB: *LIB:*

Create Revert Close

**Use Ctrl+Space
to see sub vars**

**Many
options**

**Scope by
object type and
attribute**

**Supports all
PDM vars, +
more !**

Use your action you just created!

The screenshot illustrates the process of using a newly created action in the IBM System i5 Tools. On the left, the 'My Server' tree shows the 'iSeries Objects' folder expanded, with the 'My Library' folder selected. The 'RSELAB01.*lib.test' file is highlighted. A context menu is open over this file, showing various actions. The 'User Actions' option is selected, and the 'Test action' option is highlighted. An arrow points from the 'Test action' option to the 'iSeries Commands Log' window. The 'iSeries Commands Log' window shows the command 'ADDLIB LIB(RSELAB01)' and the error message: 'Library RSELAB01 already exists in library list. Cause . . . : The library RSELAB01 already exists in the library search list. The library was not added. Recovery . . . : If RSELAB01 is the library you specified omit the command. If you did not specify library RSELAB01 then change the library name (LIB parameter). Then try the command again.' The 'Command' field is set to 'Normal'.

My Server

- iSeries Objects
 - Work with libraries...
 - Work with objects...
 - Work with members...
 - Library list
 - User libraries
 - My Library
 - RSELAB01.*lib.test
 - CLC1.*pgm.cle
 - CLR1.*pgm.cle
 - MYCOMPILE.*pgm
 - PAYROLLD.*pgm
 - PAYROLLG.*pgm
 - COMPARE.*file.p
 - EMPMST.*file.pf-
 - EVFEVENT.*file.p
 - MSTDSP.*file.dsp
 - MSTDSP2.*file.ds
 - PRJMST.*file.pf-
 - QCBLLSRC.*file
 - QCLSRC.*file.pf-
 - QCMDSRC.*file.p
 - QDDSSRC.*file.p
 - QRPGLESRC.*file
 - QRPGSRC.*file.p

Context Menu:

- New
- Go To
- Expand To
- Refresh
- Expand
- Collapse
- Add To Library List...
- Rename
- Copy
- Paste
- Delete
- Show in Table
- Change...
- Save...
- Restore(B)...
- User Actions
 - Test action
 - Work With User Actions...
- Create iSeries Project
- Properties(B)

iSeries Commands Log

My Server

ADDLIB LIB(RSELAB01)
Library RSELAB01 already exists in library list.
Cause . . . : The library RSELAB01 already exists in the library search list. The library was not added.
Recovery . . . : If RSELAB01 is the library you specified omit the command. If you did not specify library RSELAB01 then change the library name (LIB parameter). Then try the command again.

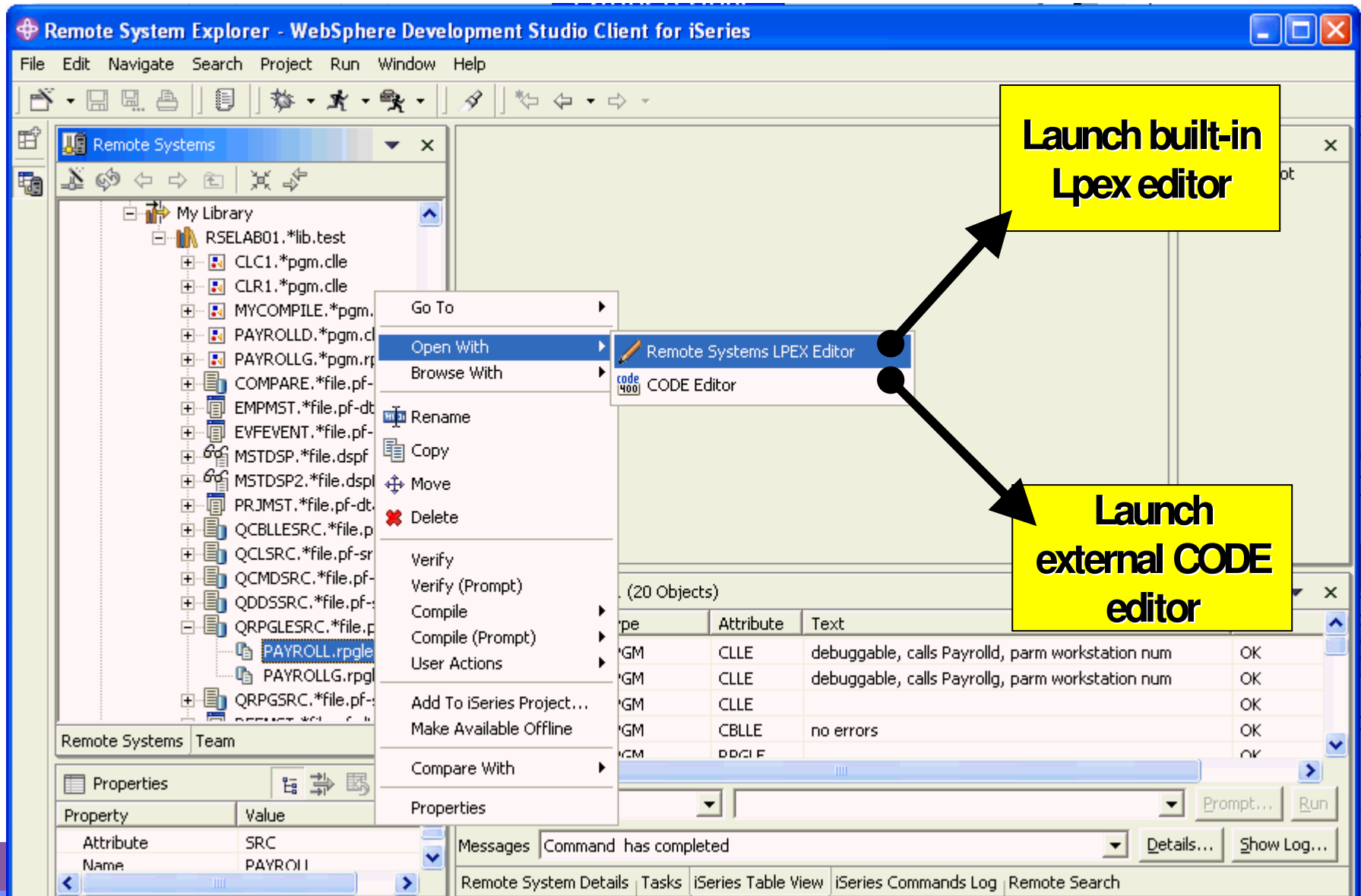
Command: Normal

Remote System Details | Tasks | iSeries Table View | iSeries Commands Log

Remote System Explorer

Editors

Editors



LPEX ("JLPEX") built-in IDE editor

The screenshot displays the LPEX (JLPEX) built-in IDE editor interface. The main window shows a code editor with a file named `PAYROLLG` open. The code is written in a format that includes control indicators, factor 1, operation and extender, factor 2, and result fields. The code is as follows:

```
.....CLON01Factor1+++++Opcode(E)+Factor2+++++Result+++++Len++D+I
C
000056      C      EVAL      EMPAPL = *BLAI
000057      C      EVAL      PRJAPL = *BLAI
000058      C      EVAL      RENAPL = *BLAI
000059      C*
000060      C*   Write the SELECT format to display
000061      C*
000062      C*
000063      C      DOU      not
000064      C      EXFMT      SELE
000065      C      IFEQ      '1'
000066      C      LEAVESR
000067
```

Annotations highlight key features:

- F4**: A yellow box with the text "F4" and an arrow pointing to the "Replace" button in the top toolbar.
- Tab for each open member**: A yellow box with the text "Tab for each open member" and an arrow pointing to the tab labeled `PAYROLLG` in the top toolbar.
- Disable/Enable Prompter and Syntax checking Toggle insert/replace**: A yellow box with the text "Disable/Enable Prompter and Syntax checking Toggle insert/replace" and an arrow pointing to the "iSeries Source Prompter" button in the bottom toolbar.

The interface also includes a "Remote Systems" panel on the left, an "Outline" panel on the right, and a "Control Indicator" panel at the bottom. The "Control Indicator" panel shows the following fields:

Control level	Indicator	Factor 1	Operation and extender	Factor 2	Result field
			EXFMT	SELECT	

The "iSeries Source Prompter" panel at the bottom shows the "Line type" set to "C: Calculation" and the "Control Indicator" panel showing the "Control level" set to "C".

Multiple Views for a Single Source Member

ORDENTR.RPGLE x

WDSCDEMO/QRPGLESRC(ORDENTR): 1

Line 69 Column 31 Replace

DName+++++ETDsFrom++To/L+++IDc.Keywords+++++

006300 D DistrictID LIKE (CDID)

006400 D WarehouseID LIKE (CWID)

006500 D OrderID LIKE (OID)

Customer info returned by SLTCUSTR

stInfo DS INZ

CustId 4

CustFName 16

CustInitial 2

007200 D CustLName 16

007300 D CustAddr1 20

WDSCDEMO/QRPGLESRC(ORDENTR): 2

Line 727 Column 1 Insert

1 2...+...3...+...4..

064500 C PARM

064600 C PARM

064700 //

064800 // Parameter list for SLTCUSTR progr

064900 C CustSlt PLIST

065000 C PARM

065100 //

065200 // Parameter list for SLTPARTR progr

065300 C PartSlt PLIST

065400 C PARM

065500 //

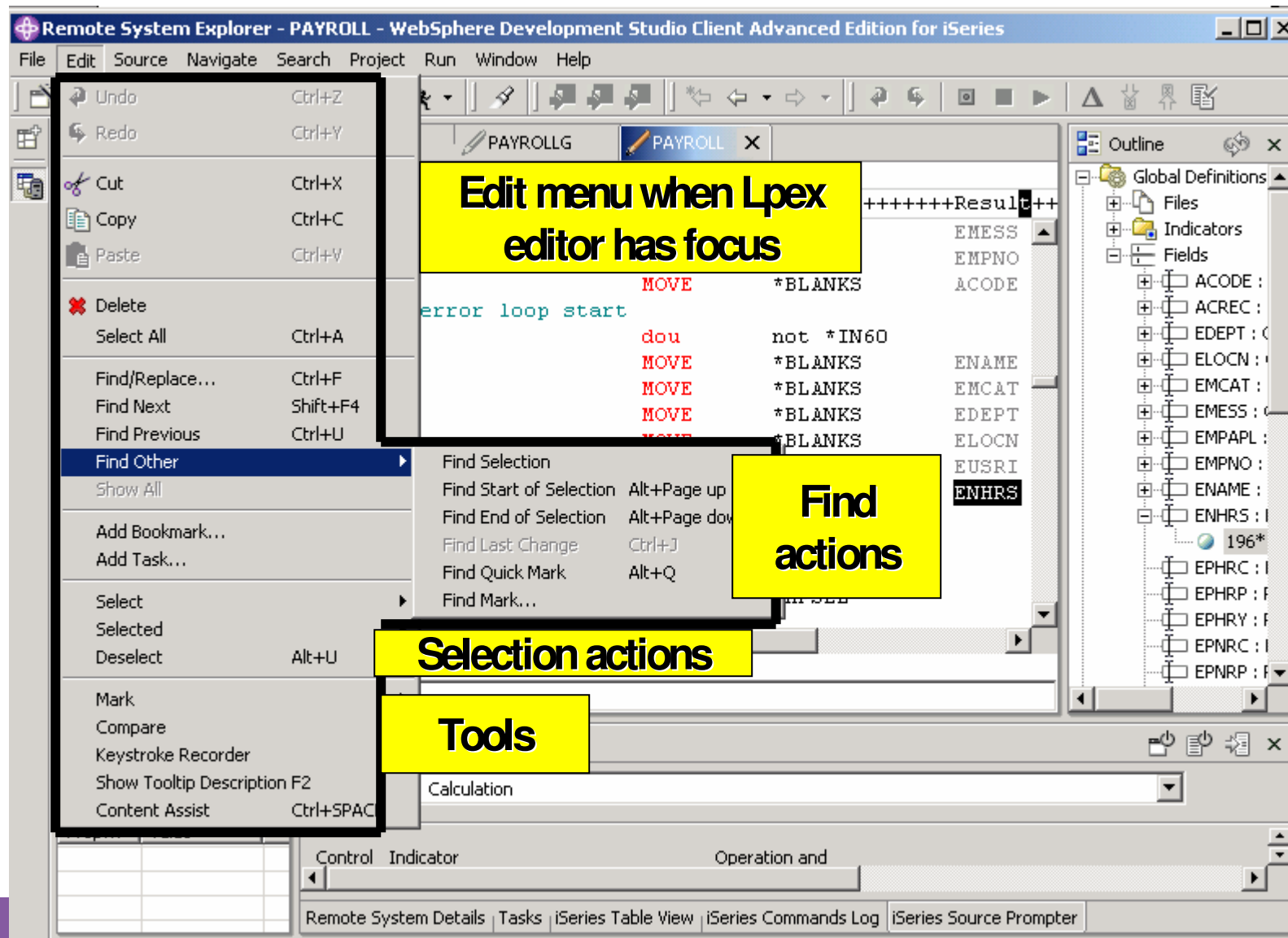
New in V6.0.1

Same source member, multiple **editable** views

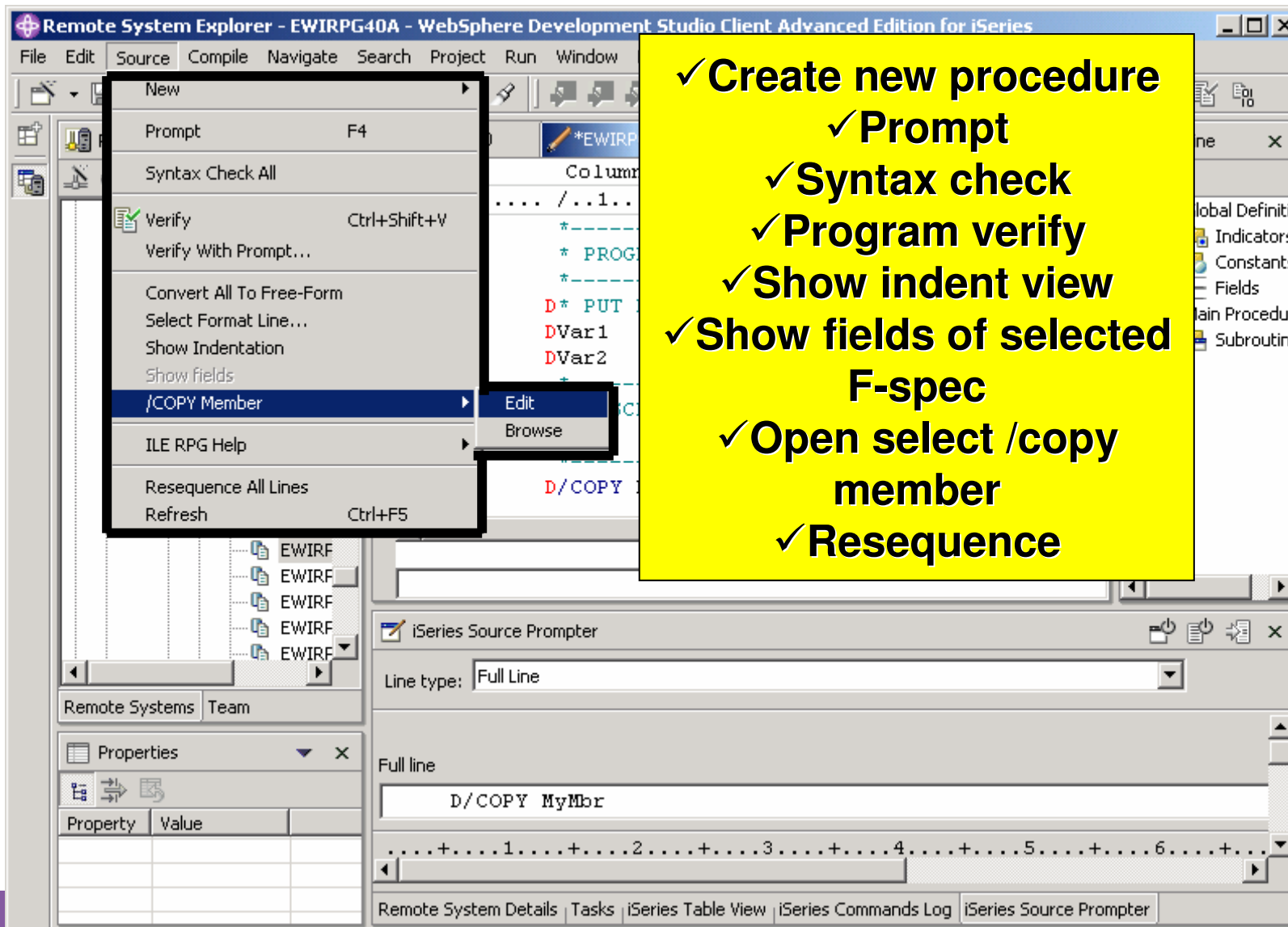
Context Menu:

- New
- Prompt F4
- Syntax Check Line
- Cut Ctrl+X
- Copy Ctrl+Insert
- Paste Ctrl+V
- Select
- Selected
- Deselect Alt+U
- Filter view
- Show all Ctrl+W
- Source
- View**
 - Open new view Ctrl+2
 - Next view Ctrl+Alt+Right
 - Previous view Ctrl+Alt+Left
 - Vertical split
- Add to Snippets...
- Save

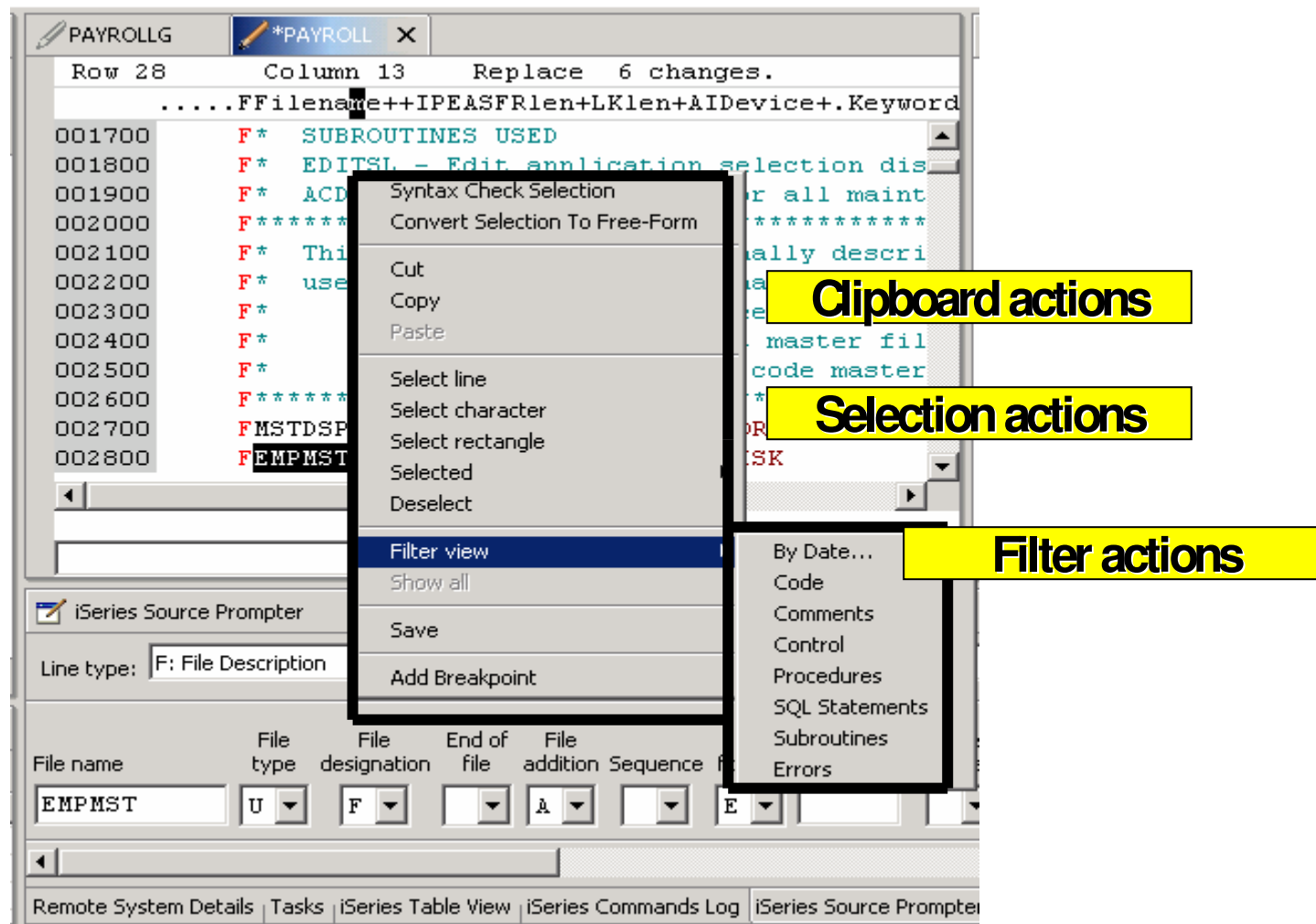
LPEX Editor Functions: Edit pulldown



LPEX Editor Functions: Source pulldown

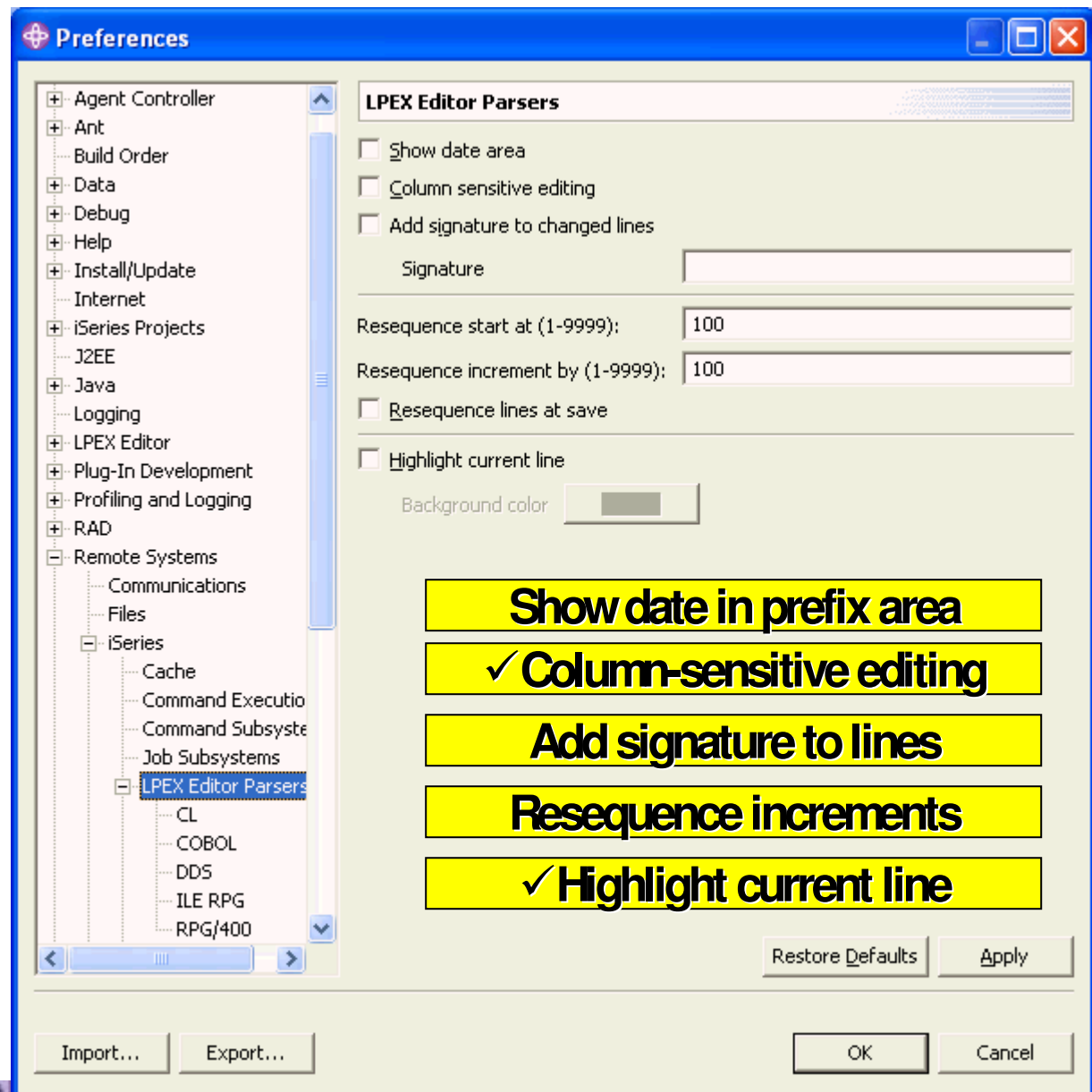


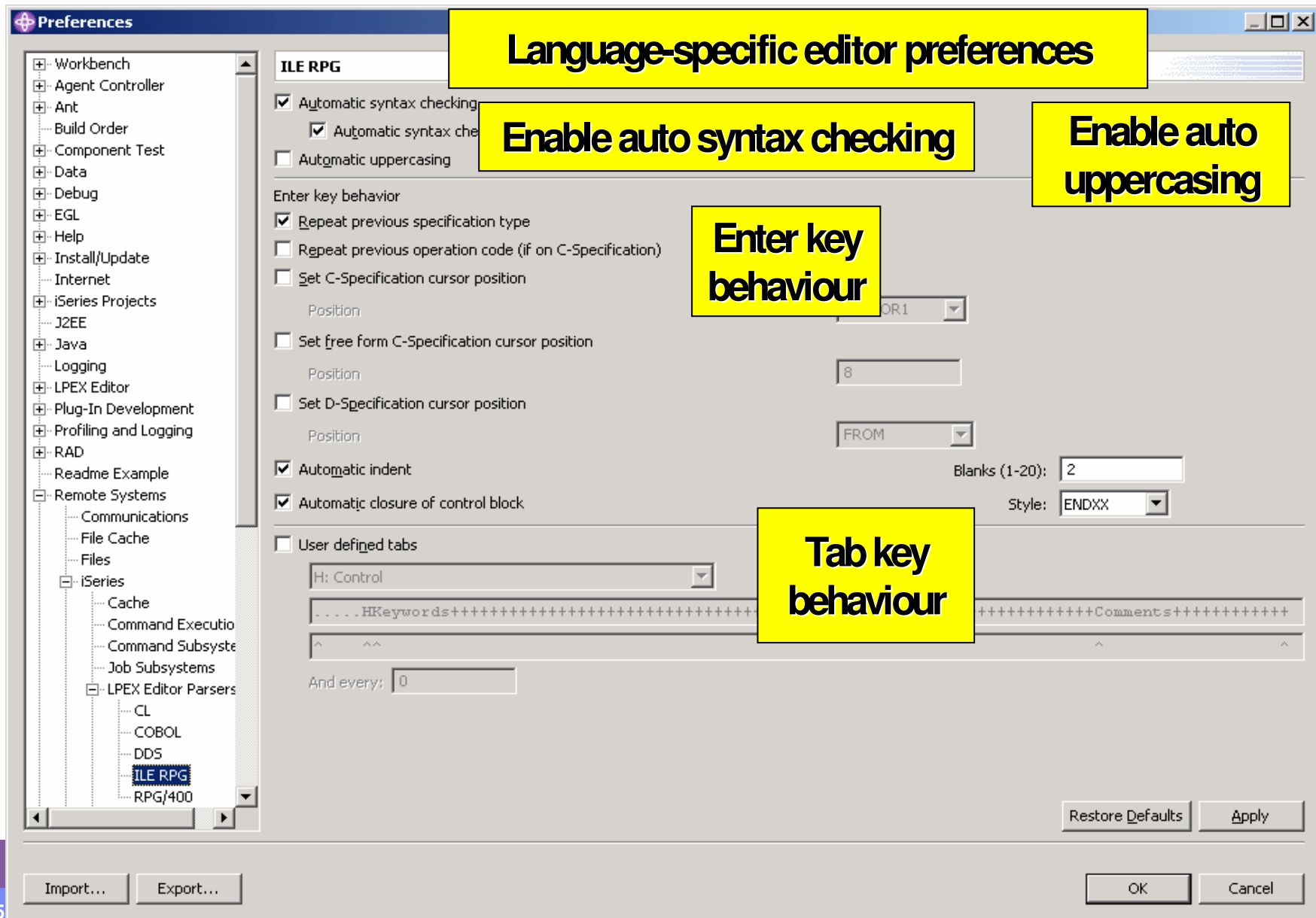
LPEX Editor Functions: Context menu



LPEX Editor Functions: Preferences

- There are also a number of cool functions you can enable via the editor preferences
 - Window->Preferences

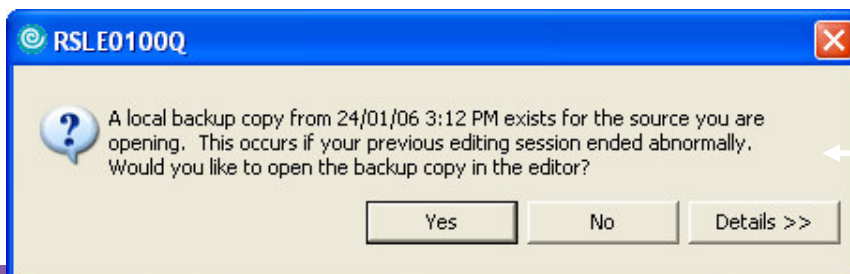
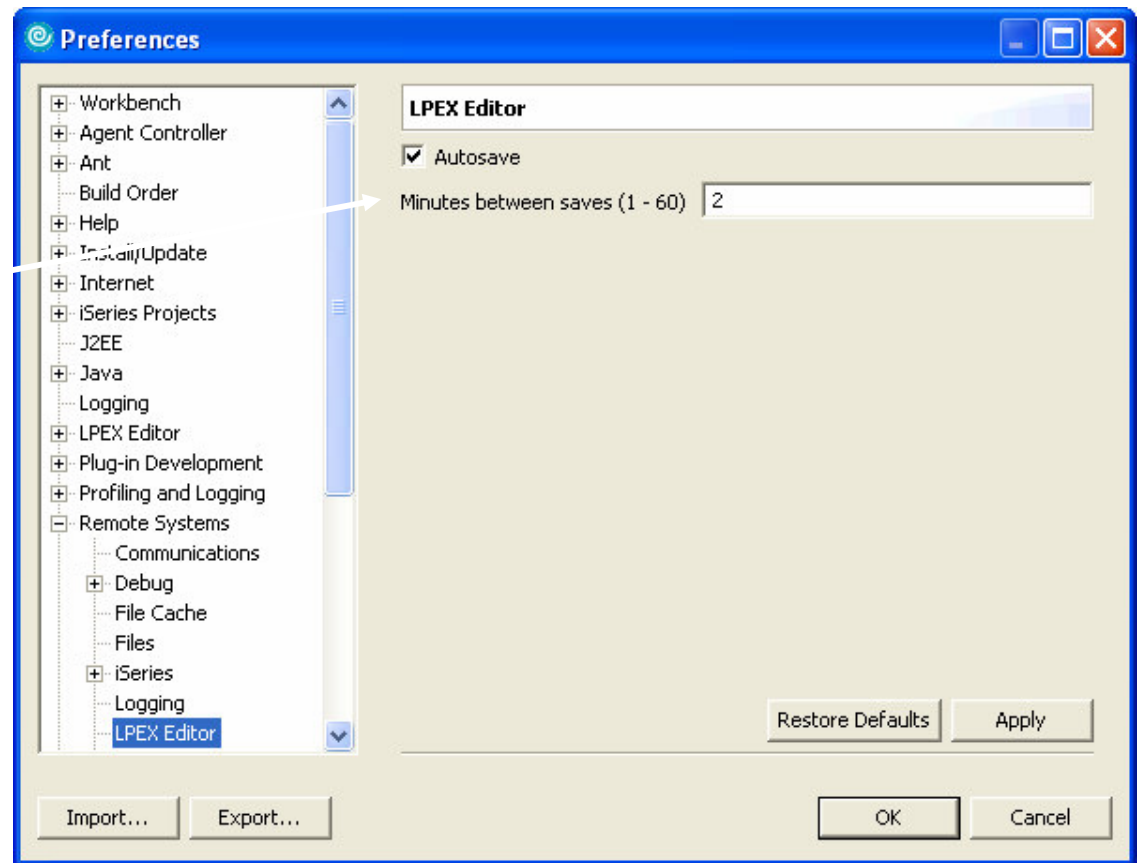




Autosave

Autosave preferences

New in V6.0.1



Dialog when opening a member and autosave backup exists

SEU Style Prefix Commands

- SEU common prefix commands
- ILE RPG Format Line prefix commands
- ILE RPG Prompt prefix commands
- OPM RPG prefix commands

Example:

I, I5, D, DD ...etc.

FD, FC, FO, PP ...etc.

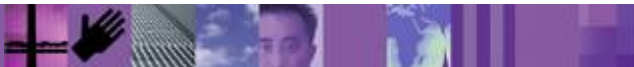
PH, P?, PC, PO, PP ...etc.

F, F?, P, IP, IP? ...etc



Getting More Editor Space

- Double-click on any Workbench view or Editor tab to maximize the view or Editor window
- Views can be dragged around and stacked into tabbed notebooks
- Views can be dragged to the left hand side of the Workbench as Fast views
 - Single click on the Fast view icon to open the view
 - Click Fast view icon again to close the view
- Oh – oh, what have I done?
 - Window -> Reset Perspective



Fast View

Remote
Systems
viewOutline
View

Tip:

✓ Use the Outline view (in fast view mode) to easily navigate in the editor while keeping the editor maximized!

LPEX Editor Views – Outline view

Row 404 Column 12 Replace

.....CLON01Factor1+++++Opcode (E) +Factor2+++++Resu

```
039400 C RSNAPL ANDNE 'X'
039500 C MOVE '1' *I
039600 C MOVE ERR(1) EM
039700 C END
039800 C* ENDSR
039900 C*
040000 C*****
040100 C* ACDESR subroutine verifies the time report
040200 C* all maintenance selections.
040300 C*****
040400 C ACDESR BEGSR
040500 C*
040600 C* Housekeeping, clear display fields and res
040700 C*
040800 C EVAL EMESS = *BLANKS
040900 C EVAL *IN60 = *OFF
041000 C EVAL *IN90 = *OFF
041100 C*
041200 C* The following statements perform
041300 C* two functions. First they determine the t
041400 C* requested and
041500 C* they determine
```

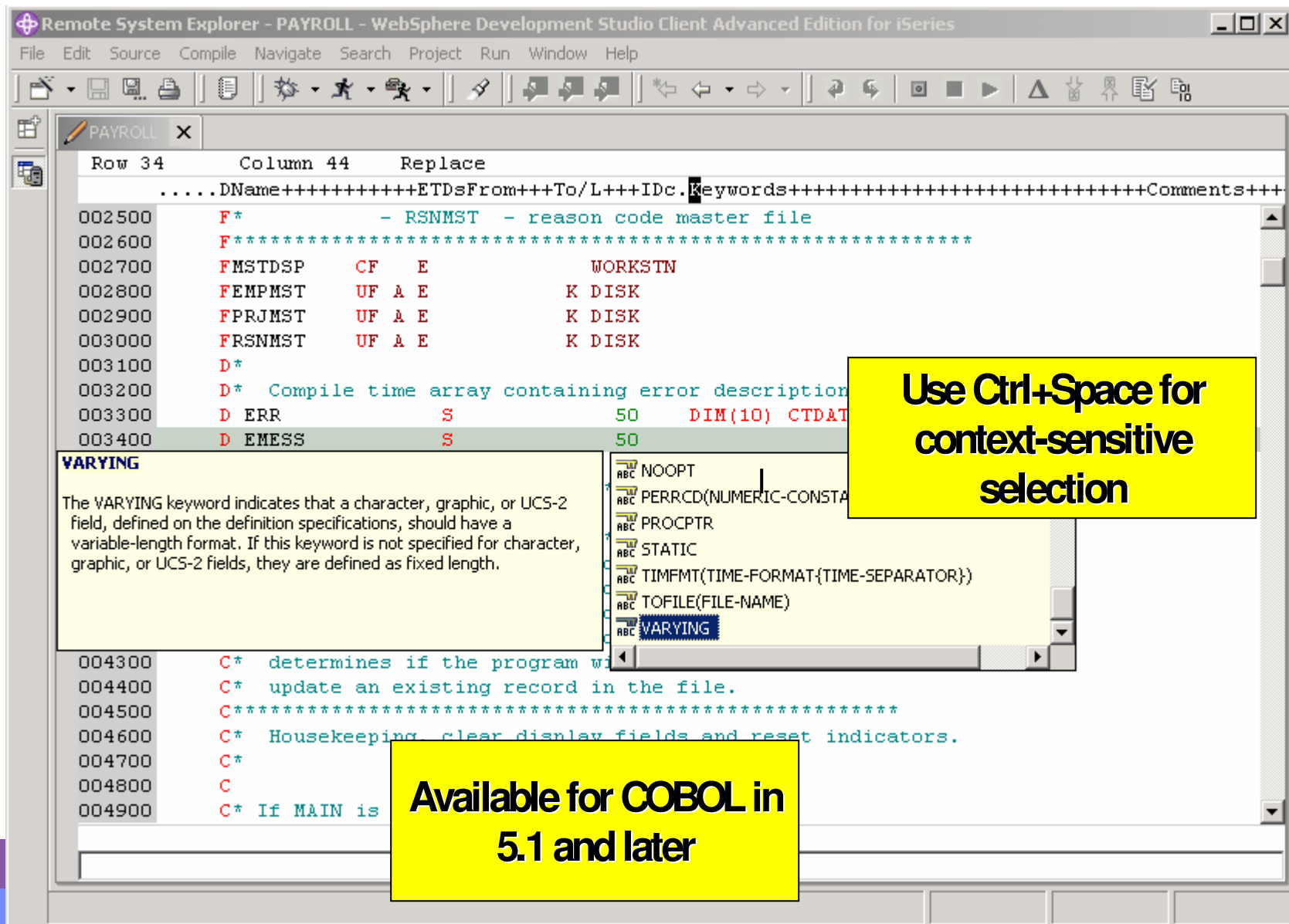
Outline

- PRJMNT
- RSNSEL
- RSNMNT
 - RSCDE : Character (8)
 - 113*
 - 129
 - RSDSC : Character (50)
 - RSHRC : Packed Decimal (7,0)
 - RSHRY : Packed Decimal (9,0)
 - RSHRP : Packed Decimal (9,0)
 - EMESS : Character (50)
 - 139
- EMPMST : DISK (Externally Described)
- RCEMP
 - 210
- PRJMST : DISK (
- RCPRJ
 - 288
- RSNMST : DISK (
- Indicators
 - *IN50
 - *INLR
- Fields
- Main Procedure
- Subroutines
 - ACDESR
 - ADDCDE

Click on entry to position to it

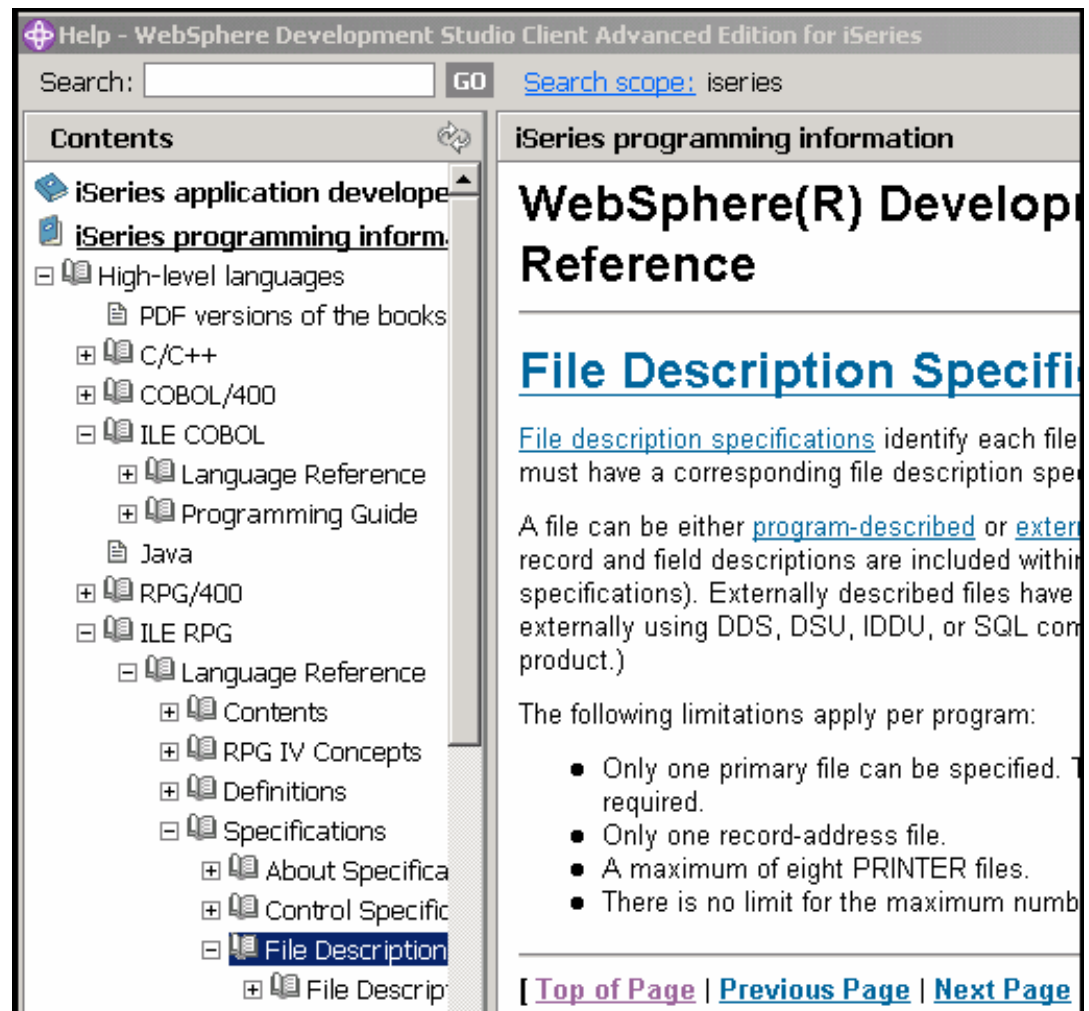
Refresh: This populates Outline view

Content Assist



Help – at your Fingertips

- RPG, Cobol, DDS online references
- Programming Guides including CL
- F1 Help
 - Sensitive to where cursor is in the editor
- Message Help
- and much more



Instant syntax checking

Errors inserted as “show lines” when cursors moves off line

Press F1 on error to get 2nd-level help

The screenshot displays the IBM WebSphere Development Studio Client for iSeries interface. The main editor window shows a program named *PAYROLL with the following code:

```
54      Column 28      Replace 2 changes.
.....CLON01Factor1++++++OpCode(E) +Factor2++++++Result
* MAIN SUBROUTINE
C      MAIN          BEGSR
C                      dou          *inkc
C                      Eval          *IN60 = *OFF
RNF5014E Operation code is not valid; specification
C                      EVAL          EMESS = *BLANK
C                      EVAL          EMPAPL = *BLANK
C                      EVAL          PRJAPL = *BLANK
C                      EVAL          RSNAPL = *BLANK
C*
C* Write the SELECT format to display. If end
```

An error message, RNF5014E, is highlighted in pink. A yellow box with the text "Errors inserted as 'show lines' when cursors moves off line" points to the error. Another yellow box with the text "Press F1 on error to get 2nd-level help" points to the error. The Help window is open, showing the "RPG Messages" section. The "Contents" pane on the left lists various topics, and the "RNF5014" message is selected. The message text reads:

RNF5014
Operation code is not valid; specification is ignored.
30
Cause : The Operation code is not valid. No further checking is done on the specification. The operation must start with a valid Operation Code and can be followed by an optional Operation Extender. If specified the Operation Extender must be one or more of A, D, E, H, M, N, P, R, T, or Z, and enclosed within parentheses.
Recovery . . . : Specify a valid operation, or omit the specification. Compile again.

At the bottom of the Help window, there are links: [\[Top of Page | Previous Page | Next Page | Table of Contents \]](#). The footer of the Help window reads: Copyright IBM Corporation 1992, 2003. All Rights Reserved.