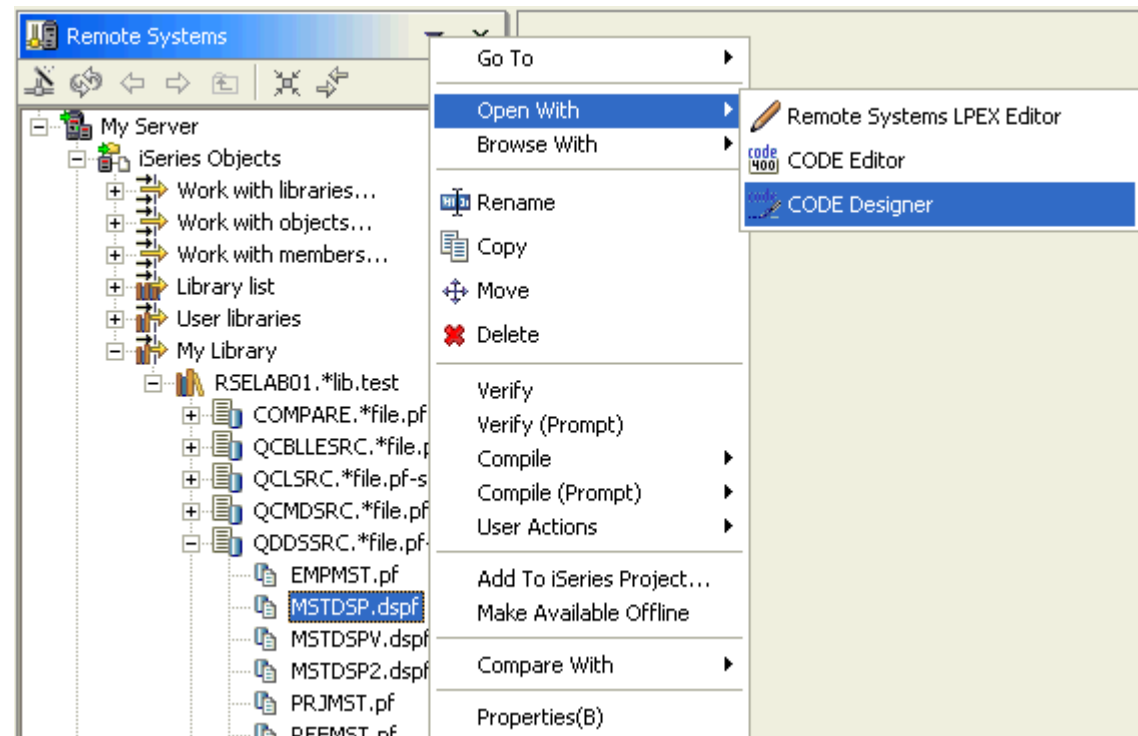


Remote System Explorer

Designer

CODE Designer

- Use **Open With -> CODE Designer** to open Designer
 - For DSPF, PRTF, PF
 - Launches in separate window
 - Currently no built-in DDS Designer, but built-in source editor does support DDS



CODE Designer

The screenshot shows the IBM CODE Designer interface. The title bar indicates the project is <ROSERVER>RSELAB01/QDDSSRC(MSTDSP) - CODE Designer. The menu bar includes File, Edit, View, Insert, Selected, Tools, and Help. The toolbar contains various icons for file operations and development tools.

The left pane shows a project tree with the following structure:

- <ROSERVER>RSELAB01
 - MAINPANEL
 - EMPSELECT
 - EMPMNT
 - EMPMNT
 - Record Keyw
 - 'PRG01'
 - 'Time R...Sys
 - *DATE
 - *TIME
 - 'Employ...enc
 - 'Number'
 - EMPNO
 - 'Name'
 - ENAME
 - 'Category'
 - EMCAT
 - 'Department'
 - EDEPT
 - 'Location'
 - ELOCN
 - 'USRID'
 - EUSRI
 - 'Normal... ho
 - ENHRS
 - 'Time R...isto
 - 'Curren... Pri
 - 'Month... Ye
 - 'Project Relat
 - EPHRC
 - EPHRY
 - EPHRP
 - 'Non Pr...elat
 - EPMRC

The main panel displays the 'EMPMT' form. The form title is 'Time Reporting System Employee Master Maintenance'. The form fields are:

- Number: 000000
- Name: BBBBBBBBBBBBBBBBBBBBBBBBBBBBBBBBBBBBBB
- Category: B
- Department: BBBBBB
- Location: BBBBBBBBBBBBBBBBBBBBBBBBBBBBBBBBBBBBBB
- USRID: BBBBBBBB
- Normal week hours: 9999 (eg. 40.0 enter 400)

The 'Field properties' dialog box is open, showing the following details for the ENHRS field:

- Reference: Override
- Library: *LIBL
- File: EMPMST
- Record: RCEMP
- Field: ENHRS
- New name: ENHRS
- Usage: IOBHPM
- Position: Size 24X80, Row 11, Column 37

CODE Designer

- **Graphical design tool for DDS**

- display files - screens

- printer files - reports

- physical files - databases

- **Powerful intuitive interface**

- Lets novice create DDS quickly and easily while giving expert access to all the features of DDS

- WYSIWYG graphical design - Drag/drop ease

- Properties notebook

- Integrated local verifier

- Explorer-like browsing of DDS hierarchy





Explorer for DDS

The screenshot displays the IBM DDS Explorer application window titled "<ROSERVER>RSELAB01/QDDSSRC(MSTDSP) - CODE Designer". The interface includes a menu bar (File, Edit, View, Insert, Selected, Tools, Help), a toolbar, and a left-hand pane showing a project tree with folders like MAINPANEL, EMPSELECT, EMPMAINT, and EMPMNT. The main pane is divided into two sections: a "Field List" table and a "DDS source" code editor.

Field List Table:

Field	Positi...	Len...	Type	Shift	Usa...	Reference	Sample
'PRG01'	2, 5	5	Text const...				PRG01
'Time R...System'	2, 30	21	Text const...				Time Reporting System
*DATE	2, 70	6	Date const...				MM/DD/YY
*TIME	3, 70	6	Time const...				HH:MM:SS
'Employ...enance'	3, 27	27	Text const...				Employee Master Maintenance
'Number'	5, 14	6					Number
EMPNO	5, 22	6				RCEMP/EMPNO ...	000000
'Name'	5, 31	4					Name
ENAME	5, 37	30				RCEMP/ENAME ...	BBBBBBBBBBBBBBBBBBBBBBBBBB
'Category'	7, 18	8	Text const...				Category
EMCAT	7, 37	1	Alphanumeric	A - Alphanumeric	Both	RCEMP/EMCAT ...	B
'Department'	8, 18	10	Text const...				Department
EDEPT	8, 37	5	Alphanumeric	A - Alphanumeric	Both	RCEMP/EDEPT ...	BBBBB
'Location'	9, 18	8	Text const...				Location
ELOCN	9, 37	30	Alphanumeric	A - Alphanumeric	Both	RCEMP/ELOCN ...	BBBBBBBBBBBBBBBBBBBBBBBBBB
'USRID'	10, 18	5	Text const...				USRID
EUSRI	10, 37	8	Alphanumeric	A - Alphanumeric	Both	RCEMP/EUSRI W...	BBBBBBBB
'Normal... hours'	11, 18	17	Text const...				Normal week hours

DDS source code:

```

A      R EMPMNT
A*
A*  THE EMPMNT FORMAT ALLOWS UPDATE OF THE EMPLOYEE NUMBER
A*  SPECIFIED ON THE EMPSEL FORMAT
  
```

Remote System Explorer

Reference:
Getting Fixes

Getting Service Packs and Verifying PTFs

- **To get client service packs from web:**
Use Help->Software Updates->IBM Rational Product Updater
Repeat until told no new updates
- **To verify you have all required host PTFs:**
On an iSeries connection, right click on iSeries Objects subsystem
Select Verify Connection



Remote System Explorer

Reference:
What's New



Remote Systems Explorer – 6.0.1 Enhancements

- V5R4 RPG, COBOL, and CL language support
 - Program verifiers (RPG & COBOL)
 - Syntax checkers
 - Online language references
- Multiple views of a single source member (Remote Systems LPEX Editor)
- Autosave
 - Unsaved changes periodically backed up to a local temporary location
 - Only for Remote Systems LPEX Editor
 - Preference to configure how often changes should be backed up



Additional Information

- **homepage:**

<http://ibm.com/software/awdtools/iseriess>

Select Library link for Labs, Tutorials, Presentations

- **newsgroup:**

<news://news.software.ibm.com/ibm.software.websphere.code400>

- **email distribution list:**

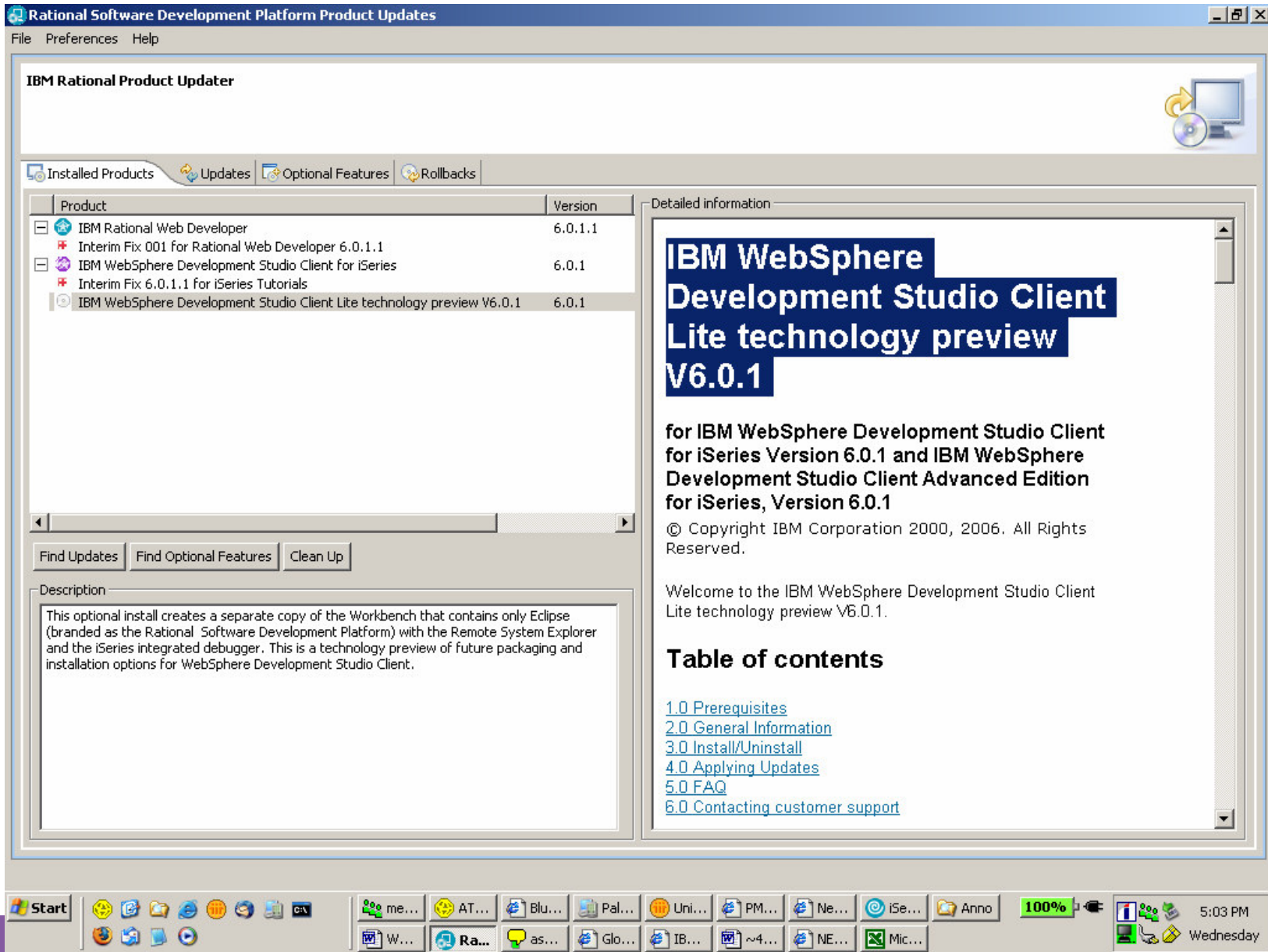
“This is the WebSphere Development Studio Client for iSeries (WDSCI-L) mailing list

To post a message email: WDSCI-L@midrange.com

To subscribe, unsubscribe, or change list options,
visit: <http://lists.midrange.com/mailman/listinfo/wdsci-l>
or email: WDSCI-L-request@midrange.com

Before posting, please take a moment to review the archives
at <http://archive.midrange.com/wdsci-l>.”





WebSphere Products from SoftLanding Systems, Inc. for the IBM iSeries 400 - Microsoft Internet Explorer

File Edit View Favorites Tools Help

Back Forward Stop Home Search Favorites Media Print Mail

Address <http://www.softlanding.com/webSphere/rse.htm> Go

Links [Webmin \(SuSE Linux 9.0\)](#) [BluePages](#) [Google](#) [i5 Literature](#) [IBM Offering Info](#) [WWQA](#) [iSeries home page](#) [V5R2 InfoCenter](#) [V5R3 InfoCenter](#)

Deutsch Español

SoftLanding SYSTEMS The Software Management Experts

Products Solutions WebSphere Downloads Services & Support News Company

WHAT'S NEW

TurnOverSVN
Business-ready
open source
version control
[CLICK HERE!](#)

View Webcast:
Open Source
Version Control
with IBM &
SoftLanding | [more](#)

New Open Source
Version Control
Options for iSeries
Market | [more](#)

New TurnOver 5.4
Offers Faster
Implementation,
More Audit
Options | [more](#)

Sarbanes-Oxley
Resource Page

RSE Extensions

SoftLanding's RSE Extensions Plug-In for WebSphere Development Studio offers convenient features to enhance your WDSC work environment and makes it easier to work entirely within the WebSphere IDE. Since RSE Extensions is an open source project, you can access the plug-in's source code as well as the compiled plug-in on this page. In one easy download the plug-in provides:

- direct access to spooled file output from WDSC
- the ability to monitor your iSeries message queue, and view and respond to iSeries messages from within WDSC
- a pre-arranged collection of views that makes it easier for you to view two source-editing windows simultaneously

Work with Spooled Output

You can quickly see job logs and compile listings as a "view" within WDSC should you encounter an error while running a job. The plug-in creates an "iSeries Spooled Files" subsystem within WDSC's Remote System Explorer, where you can right-click on a specific spooled file to view it, open it in a text editor, or save it to a file for email and search capabilities.

RSE Extensions

RSE Extensions

Home

License

Open Source Project

Get Source Code

Download Plug-In

SOFTWARE MANAGEMENT

TurnOver
Change Management

issue tracking
projects
analysis
development
testing
QA
deployment

Shortcut to index.htm

Start

messaging.ibm.co... AT&T Network Cli... BluePages | Search... Palm Desktop

Thanks for downlo... PMR - 29382,L6Q,... WebSphere Pro... Eclipse

Internet 100% 9:20 PM Monday

iSeries Projects - FLIGHT400_029568_DROTHMAN_QPADEV0002_1.txt - IBM Rational Software Development Platform

File Edit Navigate Search Project Run Window Help

Navigator

- Redbook6961
 - QCLSRC
 - QCMD5SRC
 - QDD5SRC
 - QRPGL5SRC
 - CSTDTLR.RPGLE
 - CSTSFLR.RPGLE
 - CUSTDTLR.RPGLE
 - ORDENTR.RPGLE

FLIGHT400_029568_DROTHMAN_QPADEV0002_1.txt

Line 1	Column 1	Insert
5722SS1	V5R3M0	040528

Control Language QGPL/FLIGHT400

```

Program . . . . . : FLIGHT400
Library . . . . . : QGPL
Source file . . . . . : QCLSRC
Library . . . . . : DROTHMAN
Source member name . . . . . : FLIGHT400 09/17/05 18:35:42
Source printing options . . . . . : *SOURCE *XREF *GEN *NOSECLVL *
Program generation options . . . . . : *NOLIST *NOXREF *NOPATCH
User profile . . . . . : *USER
Program logging . . . . . : *JOB
Allow RTVCLSRC command . . . . . : *YES
Replace program . . . . . : *YES
Target release . . . . . : V5R3M0
Authority . . . . . : *LIBCRTAUT
Sort sequence . . . . . : *HEX
Language identifier . . . . . : *JOB RUN
Text . . . . . : setup Flight400 demo

Compiler . . . . . : IBM iSeries Control Language Compi
  
```

Control Language Source

Tasks | iSeries Commands Log | iSeries Job Status

0 items

	Description	Resource	In Folder	Location

Spooled file resource: FLIGHT400

Start | me... | AT... | Blu... | Pal... | Uni... | PM... | Ne... | iSe... | Anno | 100% | 5:06 PM Wednesday

Legal information

Acknowledgement:

- This presentation is a collaborative effort of the IBM Toronto iSeries Application Development presentation team, including work done by:
Phil Coulthard, George Farr, Claus Weiss, Inge Weiss, Don Yantzi, and David Slater

Disclaimer:

- The information contained in this document has not been submitted to any formal IBM test and is distributed on an as is basis without any warranty either express or implied. The use of this information or the implementation of any of these techniques is a customer responsibility and depends on the customers' ability to evaluate and integrate them into the customers' operational environment. While each item may have been reviewed by IBM for accuracy in a specific situation, there is no guarantee that the same or similar results will result elsewhere. Customers attempting to adapt these techniques to their own environment do so at their own risk.

Reproduction:

- The base presentation is the property of IBM Corporation. Permission must be obtained PRIOR to making copies of this material for any reason.



Trademarks and Disclaimers

© IBM Corporation 1994-2006. All rights reserved.

References in this document to IBM products or services do not imply that IBM intends to make them available in every country.

The following terms are trademarks of International Business Machines Corporation in the United States, other countries, or both:

AS/400	e-business on demand	i5/OS
AS/400e	IBM	OS/400
eServer	IBM (logo)	System i5
@server	iSeries	

Rational is a trademark of International Business Machines Corporation and Rational Software Corporation in the United States, other countries, or both.

Intel, Intel Logo, Intel Inside, Intel Inside logo, Intel Centrino, Intel Centrino logo, Celeron, Intel Xeon, Intel SpeedStep, Itanium, and Pentium are trademarks or registered trademarks of Intel Corporation or its subsidiaries in the United States and other countries.

Linux is a trademark of Linus Torvalds in the United States, other countries, or both.

Microsoft, Windows, Windows NT, and the Windows logo are trademarks of Microsoft Corporation in the United States, other countries, or both.

UNIX is a registered trademark of The Open Group in the United States and other countries.

Java and all Java-based trademarks are trademarks of Sun Microsystems, Inc. in the United States, other countries, or both.

Other company, product or service names may be trademarks or service marks of others.

Information is provided "AS IS" without warranty of any kind.

All customer examples described are presented as illustrations of how those customers have used IBM products and the results they may have achieved. Actual environmental costs and performance characteristics may vary by customer.

Information concerning non-IBM products was obtained from a supplier of these products, published announcement material, or other publicly available sources and does not constitute an endorsement of such products by IBM. Sources for non-IBM list prices and performance numbers are taken from publicly available information, including vendor announcements and vendor worldwide homepages. IBM has not tested these products and cannot confirm the accuracy of performance, capability, or any other claims related to non-IBM products. Questions on the capability of non-IBM products should be addressed to the supplier of those products.

All statements regarding IBM future direction and intent are subject to change or withdrawal without notice, and represent goals and objectives only. Contact your local IBM office or IBM authorized reseller for the full text of the specific Statement of Direction.

Some information addresses anticipated future capabilities. Such information is not intended as a definitive statement of a commitment to specific levels of performance, function or delivery schedules with respect to any future products. Such commitments are only made in IBM product announcements. The information is presented here to communicate IBM's current investment and development activities as a good faith effort to help with our customers' future planning.

Performance is based on measurements and projections using standard IBM benchmarks in a controlled environment. The actual throughput or performance that any user will experience will vary depending upon considerations such as the amount of multiprogramming in the user's job stream, the I/O configuration, the storage configuration, and the workload processed. Therefore, no assurance can be given that an individual user will achieve throughput or performance improvements equivalent to the ratios stated here.

Photographs shown are of engineering prototypes. Changes may be incorporated in production models.



IBM Software Group

Remote System Explorer in IBM WebSphere Development Studio Client for IBM System i5

WebSphere. software

iSeries AD Team. Toronto



 e-business software

© 2004 2006 IBM Corporation